

Marengo Community High School



2012-2013
Curriculum Guide

M.C.H.S. #154
110 Franks Road
Marengo, Illinois 60152
www.mchs154.org

INTRODUCTION

This guide provides information about our educational program, course descriptions, and extracurricular activities. Marengo Community High School makes every effort to ensure that this information is accurate and correct. However, MCHS reserves the right to revise contents of this guide. By using the guide, the student can survey the opportunities available from ninth through twelfth grade. Students: take advantage of the excellent and varied curriculum that the school district provides for you, plan your four-year program carefully, and seek the assistance of your counselors, teachers, and parents.

Marengo Community High School
110 Franks Road
Marengo, IL 60152
(815) 568-6511
FAX (815) 568-6510
www.mchs154.org

M.C.H.S. ADMINISTRATION

Superintendent

Dr. Dan Bertrand
 (815) 568-6511 ext. 1511
 bertrandd@mchs154.org

Principal

Mr. Scott Shepard
 (815) 568-6511 ext. 1312
 shepards@mchs154.org

Assistant Principal

Mr. Richard Webb
 (815) 568-6511 ext. 1322
 webbr@mchs154.org

Assistant Administrator
 Special Ed Director

Ms. Julie Amendt
 (815) 568-6511 ext. 1333
 amendtj@mchs154.org

Assistant Administrator
 Building & Grounds, Technology
 & Transportation

Mr. David Engelbrecht
 (815) 568-6511 ext. 1351
 engelbrechtd@mchs154.org

Assistant Administrator
 Athletic Director

Mrs. Becky Weinhandl
 (815) 568-6511 ext. 1612
 weinhandlb@mchs154.org

GUIDANCE DEPARTMENT

Counselor for Last name: A-G

Ms. Maureen Griffin
 (815) 568-6511 ext. 1353
 griffinm@mchs154.org

Counselor for Last name: H-P

Mr. Nick Rode
 (815) 568-6511 ext. 1363
 roden@mchs154.org

Counselor for Last name: Q-Z

Ms. Natasha Schultz
 (815) 568-6511 ext. 1343
 schultzn@mchs154.org

Social Worker

Mrs. Kathleene Joyce
 (815) 568-6511 ext. 1373
 joycek@mchs154.org

GRADUATION INFORMATION

Graduation Requirements	1
-------------------------------	---

ALTERNATE AVENUES TO EARN CREDIT

MAP, Correspondence Courses.....	2-3
AP, IVS, MCC Courses.....	3
College Prep Pathway.....	4
NCAA and NAIA Eligibility Requirements.....	4-5
Tech Prep Program Articulation.....	6
Foreign Exchange Students	6

GRADING INFORMATION

Grading System	7
Honor Roll	8
Class Rank	8
Pass/Fail Option.....	8
Grade Reports.....	8
Incompletes.....	8
Eligibility	8
Semester Exams and Attendance.....	8

SCHEDULING INFORMATION AND PROCEDURES

Minimum Course Load.....	9
Part-time Scheduling Option	9
Fifth Year Scheduling Option.....	9
Physical Education Exemption Policy.....	9
Early Release/Late Start Policy	10
Schedule Changes.....	10
Class Placement/ Prerequisite Waiver.....	10

GENERAL INFORMATION

Gifted Education.....	11
Special Education	11
Pupil Personnel Services	11
Career Preparation/Post-Secondary Options	12

STUDENT ACTIVITIES/ORGANIZATIONS, RECOGNITION PROGRAM.. 13-16**COURSE DESCRIPTIONS**

Course Listings Chart.....	17-21
Agricultural Science Curriculum.....	22-23
Business Curriculum.....	24
Technology Equipment and Computer Services	25
English Curriculum.....	29-29
Family & Consumer Sciences Curriculum.....	29-31
Fine Arts Curriculum.....	32-35
World Language Curriculum.....	35-36
Health Occupations Curriculum	36
Industrial and Manufacturing Technology Curriculum.....	37-40
Mathematics Curriculum	40-42
Physical Education Curriculum	43-44
Science Curriculum	45-47
Social Studies Curriculum	48-49
Work-Related Experiences	50
Math & Science Flow Charts.....	51-53

GRADUATION INFORMATION

GRADUATION REQUIREMENTS

1. 22.0 credits will be required to graduate.
2. **Graduation Requirements – Class of 2013**

4 credits	English (English I, II, III, or Humanities <u>and</u> 1 credit of acceptable English electives Senior year)
3 credits	Math (must include 1 credit Algebra <u>and</u> 1 credit of Geometry content)
2 credits	Science (including Biology)
2.5 credits	Social Studies (Global Studies, US History, & Civics) <i>Passing the Government/Civics course fulfills the Illinois Constitution and US Constitution graduation requirement established by the state of Illinois</i>
4 credits	Physical Education (unless exempted) Driver Education and Health to total 8 semesters
1 credit	Music, Art, World Language or Vocational courses
0.5 credit	Consumer Education requirement (Resource Management)
0.5 credit	Computer Applications requirement
4.5 credits	Elective coursework
- Graduation Requirements – Class of 2014, 2015 & 2016**

4 credits	English (English I, II, III, or Humanities <u>and</u> 1 credit of acceptable English electives senior year)
3 credits	Math (must include 1 credit Algebra <u>and</u> 1 credit of Geometry content)
3 credits	Science (including Biology)
2.5 credits	Social Studies (Global Studies, US History, & Civics) <i>Passing the Government/Civics course fulfills the Illinois Constitution and US Constitution graduation requirement established by the state of Illinois</i>
4 credits	Physical Education (unless exempted) Driver Education and Health to total 8 semesters*
1 credit	Music, Art, World Language or Vocational courses
0.5 credit	Consumer Education requirement (Resource Management course)
0.5 credit	Computer Applications requirement
3.5 credits	Elective coursework
3. Participation in the Prairie State Achievement Examination or accepted alternate
4. Failure to meet these requirements makes a student ineligible for graduation.
5. The superintendent may waive some graduation requirements provided there are extenuating circumstances, such as physical or mental considerations or family hardship.
6. Early Graduation. Students who are eligible, having completed graduation requirements, may apply for early graduation. The “Application for Early Graduation” form must be completed and returned with all appropriate signatures prior to August 1st of the student’s senior year.

** Refer to PE exemption guidelines

ALTERNATE AVENUES TO EARN CREDIT

MARENGO ACCELERATION PROGRAM (MAP)

The Marengo Acceleration Program (MAP) is an alternative education program for non-traditional students who have fallen behind in credits and are at risk of not graduating from Marengo Community High School. The educational model is individualized and utilizes computer-accessed instructional programs. Students that may qualify must apply for the program with a process that begins with the high school counselor. Participation in the MAP program is subject to approval with the final decision resting with the high school principal. Application to the MAP program is limited to students who are in at least their third year of high school. Students are allowed to enter MAP at semester.

CORRESPONDENCE COURSES OR OTHER NON-MCHS CLASSES

All correspondence and on-line courses must be pre-approved by the Guidance Department. Students may take a **maximum of 2 elective credits** through approved correspondence schools or on-line courses. Students who have failed a required class may take a correspondence or on-line course to make up the credit. Grades from correspondence and on-line courses will be computed into a student's GPA. Credit will not be issued from MCHS until the official transcript is received from the approved school.

ADVANCED PLACEMENT (AP) COURSES

Students are responsible for the cost of the AP exam. This fee is due at the time of registration. If a student earns a score of 3 or higher on the AP exam; a refund will be processed. The maximum AP exam refunds are two.

Students may enroll in AP courses at MCHS. All students enrolled in AP courses are required to take the AP exam in May. The cost to take the AP exam is the responsibility of the student/family and is due at registration. A student who scores a 3 or higher on an AP exam will be refunded the cost of the exam. Seniors who enroll in Humanities must take the AP English Literature exam. The students receive a score from 1-5. Students may earn credit at the college level by reporting their test score to the college they plan to attend. Most colleges give credit for scores of 3 or higher.

Our current AP offerings are:

English Literature	Chemistry	Calculus AB	U.S. History
Statistics	Macroeconomics	Humanities (Sr. only take the AP English Lit. exam)	

Also, many AP courses are offered through Illinois Virtual School.

ILLINOIS VIRTUAL SCHOOL (IVS)

Students may take coursework through the Illinois Virtual School. In order to take a course, students should begin by contacting their counselor. All courses must be approved by the principal. Once approved, students may take courses for MCHS credit. Students may take an IVS course under the following circumstances:

- The student wants to take a course that MCHS does not offer.
- The student needs to make up a class they failed previously.
- A class that a student wants will not fit into the schedule

For any IVS AP course, students will be responsible for 1/3 of the tuition prior to enrollment with the district picking up the remaining 2/3 of the cost. All fees and textbook costs will be the responsibility of the student. Upon completion, the final grade will be added to the student's transcript as a ½ credit class and be computed in the GPA as a honors level for AP and general level for electives

Students enrolled in IVS AP courses will be required to take the May AP exam. **The cost to take the AP exam is the responsibility of the student/family and is due at registration.** The cost of all other elective courses will be the responsibility of the student. See the IVS website www.ilvirtual.org for a current course listing.

IVS AP COURSES (student pays 1/3 tuition)

Microeconomics	French Language
English Language and Composition	Biology
European History	Environmental Science
Human Geography	U.S. Government and Politics
Psychology	
Spanish Language	

IVS ELECTIVE COURSES (student pays full tuition)

Business Communication	Introduction to HTML	Astronomy
Business and Personal Protocol	Introduction to Web Design	Biotechnology
Assembly Language Programming	Networking Basics	Oceanography
Cisco Certified Network Associate	Art History	Anthropology
Personal and Interpersonal Development	British Literature	French I and II
German I and II	Latin I and II	

MCHENRY COUNTY COLLEGE COURSEWORK-RUNNING START

Students may take coursework at MCC or other community colleges while enrolled at MCHS. These courses may be taken for high school credit as well, if indicated prior to registration.

Schedules can be adjusted to accommodate day time courses, but students must meet our enrollment expectations. No evening courses will be considered as a substitute for daytime courses. The student's MCHS course load should consist of a minimum of four academic subjects and PE. Any change from this will require special administrative approval.

If high school credit is desired, the course must be a three hour course at MCC and have regular attendance required. It will then count as a ½ credit class at MCHS and be computed in the GPA at a general level.

Students interested in taking classes at MCC need to apply through their counselor. Students will be responsible for all college fees.

ELIGIBILITY REQUIREMENTS:

- Senior status,
- No failing classes in the previous semester,
- Cumulative GPA must be "C" or higher (6.0 on 12.0 scale), and
- Must be meeting all graduation requirements.

DUAL CREDIT PROGRAM WITH MCHENRY COUNTY COLLEGE

MCHS has a course that is aligned with MCC. If a student takes the MCHS course, he/she will earn credit at MCC for the MCHS course. This is an opportunity for a student to earn college credit at no personal cost.

<u>MCHS Course</u>	<u>Replaces MCC Course</u>	<u>MCC Credit hours</u>
Basic Nurse Assistant Training	Basic Nurse Assistant	7

COLLEGE PREP PATHWAY

The Illinois Board of Higher Education has established statewide minimum admission standards for Illinois public colleges and universities. Since admission requirements vary, it is up the student to make sure specific requirements are met by checking with each college. These minimum requirements have been adapted to help high school students improve their academic preparation for baccalaureate degree programs.

MINIMUM STANDARDS for Illinois public universities

- 4 years of ENGLISH (written and oral communications and literature)
- 3 years of SOCIAL STUDIES (emphasizing history and government)*
- 3 years of MATHEMATICS (algebra through advanced algebra, geometry, trigonometry)*
- 3 years of SCIENCE (laboratory sciences)*
- 2 years of ELECTIVES (world language, music, art, theatre)**

*Specific courses vary according to individual university.

**ELECTIVES vary according to individual university. The following Illinois State Universities require a minimum of 2 years of one world language: University of Illinois Urbana-Champaign, University of Illinois Springfield, and University of Illinois Chicago as of 11/24/2010.

Students should be familiar with the criteria most colleges use for admission

- A. Strong academic program with good grades
- B. Rank in class
- C. College entrance exam score (A.C.T. or S.A.T.)

We provide many opportunities to prepare for a successful transition to college. The optional PSAT/NMSQT is recommended testing for juniors for an early indication of college potential, SAT practice, and entrance for some scholarships.

NATIONAL COLLEGIATE ATHLETIC ASSOCIATION ELIGIBILITY REQUIREMENTS

Students planning to enroll in college as a freshman and participate in Division I or Division II athletics must be certified by the NCAA Initial-Eligibility Clearinghouse. Forms are available online.

To be certified by the Clearinghouse, the student must:

1. Graduate from high school
2. Earn a grade-point average of at least 2.00 (4 point scale) (6 on our scale) in an approved core curriculum of at least 16 academic courses, which were successfully completed in grades 9 through 12.
3. Earn a sum of scores of at least 68 on the ACT or a combined score of at least 820 on the SAT on a national test date. The ACT score must be reported directly to NCAA Clearinghouse. Use code 9999.

NCAA CORE UNITS REQUIRED

	Division I	Division II
English Core	4	3
Math Core (Algebra I or higher)	3	2
Science Core	2	2
Social Studies Core	2	2
From English, Math, or Science (additional)	1	2
Additional Core (English, Math, Science, Social Studies, Foreign Language, Computer Science, Philosophy, Nondoctrinal Religion)	4	3
Total core units required	16	14

For more information, please go to www.ncaaclearinghouse.net

NATIONAL ASSOCIATION OF INTERCOLLEGIATE ATHLETES (NAIA)

When you attend one of nearly 300 NAIA member colleges or universities, you are welcomed into a supportive environment of students, faculty and athletic professionals dedicated to your success. To participate in athletics in the NAIA, you must be admitted to the college or university under admission standards that are equal to or higher than those applied to the general student body.

REQUIREMENTS:

- Be a graduate of an accredited high school or be accepted as a regular student in good standing as defined by the enrolling institution and
- Meet 2 of the 3 following requirements
 - Minimum ACT of 18
 - Minimum overall high school grade point average of 2.0 on a 4.0 scale
 - Graduate in the top half of your high school class.

For more information, please go to <http://www.playnaia.org/>

COLLEGE IN HIGH SCHOOL

“College in High School” is a high school course of study that teaches specific career and technical skills. It begins with a solid foundation of applied academics in English, math, and science. In the junior and senior years, the emphasis will include training in specialized technical courses. Students may participate in work-site training to gain practical, on-the-job experience. One of the best things is that it doesn’t end after high school. Students have the option of articulating courses with McHenry County College, attending a four-year college, or continuing with the work experience.

COLLEGE CREDIT THROUGH MCHENRY COUNTY COLLEGE

MCHS offers student access to college credit courses through MCC. There are two ways to earn college credit and use those credits for your high school requirements. Students may take *articulated* courses or *Dual Credit* courses.

Articulated: If a student takes an articulated MCHS course and receives a “B” or higher grade and enrolls at MCC in the articulated program, (s)he may earn credit at MCC for the MCHS course. Students interested in the articulation agreements to earn MCC credit should talk to their counselor for more information about the regulations, expectations, and timelines associated with this program.

Dual Credit: If a student takes a *dual credit* course at MCHS, the grade is entered as fully transcribed credits at MCC. Students interested in dual credit should talk to their counselor for more information about the regulations, availability, expectations, and timelines associated with this program. (see MCC-Running Start)

<u>MCHS Course</u>	<u>Replaces MCC Course</u>	<u>MCC Credit hours</u>
Drafting Occupations	Basic Technical Drafting	4
Child Dev & Child Care I	Topics in Early Childhood Education	3
Auto Service Occupations	Automotive Engine Technology & Lab	4
Intro to Ag & Horticulture Design	Introduction to Horticulture	3
Accounting I	Basic Accounting Procedures	3
Accounting I & Accounting II	Financial Accounting	3

FOREIGN EXCHANGE STUDENTS

Request for enrollment of foreign exchange students sponsored by local service organizations or American Field Service will be made to the Superintendent. When recommended by the Superintendent, the Board of Education will consider the enrollment of foreign exchange students for attendance at Marengo Community High School. Those students attending will **not** receive a diploma. They will instead receive a certificate of attendance as part of their cultural exchange program.

GRADING INFORMATION**MARKING SYSTEM**

A – Excellent
 B – Above Average
 C – Average
 D – Below Average
 F – Failing

I - Incomplete
 P/F – Pass/Fail
 N – Audit or No Credit
 WP – Withdrew Passing
 WF – Withdrew Failing
 ME – Medically Excused

GRADING SCALE

A	92-100	D+	68-69.99
A-	90-91.99	D	62-67.99
B+	88-89.99	D-	60-61.99
B	82-87.99	F	Below 60
B-	80-81.99		
C+	78-79.99		
C	72-77.99		
C-	70-71.99		

QUALITY POINT SCALES

Quality Point Scale is the numerical value used for determining grade point average (G.P.A.), class rank, and honor rolls. Abbreviations used with course descriptions are indicated below: (This is how GPA is determined It is determined by credits attempted; add all credits minus PE, Choir, Band and Color Guard then divide the credits attempted by total points to get GPA)

(H) = Honors
 (G) = General

Quality Points

HONORS	GENERAL
A = 14.00	A = 12.00
A- = 13.00	A- = 11.00
B+ = 12.00	B+ = 10.00
B = 11.00	B = 9.00
B- = 10.00	B- = 8.00
C+ = 9.00	C+ = 7.00
C = 8.00	C = 6.00
C- = 7.00	C- = 5.00
D+ = 6.00	D+ = 4.00
D = 5.00	D = 3.00
D- = 4.00	D- = 2.00
F = 0	F = 0

HONORS COURSES

English-Honors English I, II, III, English Literature AP, College Writing, Humanities

Math-Unified Geometry, Algebra II, Pre-Calculus, Calculus AP, Statistics AP

Science-Physics, Chemistry AP, Advanced Biology,

Social Studies-U.S. History AP, Macroeconomics AP

Business-Accounting II

World Language-Spanish III and IV and Mandarin Chinese III

Fine Arts – Art History AP

HONOR ROLL

The honor roll listings will be determined by the quality point averages that the students compile each semester. Example, students carrying four academic subjects will have the sum of the four quality point scores divided by four to derive the quality point average. Courses **not** included in honor roll evaluation are physical education, band, choir, and courses taken Pass/Fail. Two honor rolls exist.

HIGH HONOR ROLL: (A) includes students with a quality point average between 11 and 14.

HONOR ROLL: (B+) includes students with a quality point average between 10 and 10.99.

CLASS RANK

All credit courses will be included in class rank with the exception of band, choir, physical education, and courses taken on as pass/fail option (P/F). Class rank is figured on a semester basis to 3 decimals.

PASS/FAIL OPTION

A pass/fail option is available to encourage juniors and seniors to take elective courses, which might be challenging and may affect grade point average due to grade weight. **RESTRICTIONS:** must be elective course, only one class per semester may have this option, must have a minimum of 4 graded academic courses per semester to allow an additional course be taken P/F, P/F option must be recorded **prior** to the start of the-5th week of the class and may **not** change to a graded course once the course begins.

GRADE REPORTS

All grades will be posted weekly through teacher-logic. Mid semester reports will be sent home at the 9 week period. Semester report cards will be mailed home at semester.

INCOMPLETES

An incomplete grade in a course indicates that minimum standards have not been accomplished, the course has not been completed, and, for seniors, graduation is not possible. Students are expected to complete work in a timely fashion. When an incomplete is given as a semester grade due to extenuating circumstances, the work should be completed within two weeks after the end of the semester unless the principal has granted an extension.

ELIGIBILITY

Students must be passing the equivalent of four full credit classes each week excluding band, choir, and P.E. to be eligible for athletic and other extracurricular activities. **Note:** no credit is given for an “audit” class. After each semester, the student’s grades are checked to make sure the equivalent of four full credit classes have been passed. If not, the student becomes ineligible for the entire following semester.

SEMESTER EXAMS AND ATTENDANCE

Final Exam Exemption - Students may be exempt from some final exams for both semesters. For first semester, students are exempt for PRIDE cards earned in the 2nd semester of the previous school year. For 2nd semester, students are exempt for PRIDE cards earned 1st semester of the current school year. Additionally, seniors can be exempt from 2nd semester exams based on their scores on the PSAE in their junior year. For every “meets expectations” score, seniors will be exempt from one spring exam. For every “exceed expectations” score, seniors can be exempt from 2 spring exams. Students cannot be exempt from exams in classes they are failing. A student may exempt an exam from the same class both semesters only if they have no other options to exempt. The teacher reserves the right to deny students an exemption based on academic performance in their class.

SCHEDULING INFORMATION AND PROCEDURES

MINIMUM COURSE LOAD

All students will be scheduled in five classes plus physical/health/safety education each semester with no more than one study hall. Band or choir may count as one class. Seniors with a **minimum GPA of 10.0** may be eligible for the privilege based late start or early release program. Students must be passing all classes.

PART-TIME SCHEDULE

The Board of Education may allow an Administrator to develop a modified daily schedule in an attempt to accommodate individual special circumstances. Seniors who are close to fulfilling their high school graduation requirements may request a part-time schedule to attend college, trade, or technical school with a maximum enrollment of two school approved courses per semester taken during the high school hours. This permits them to earn college credit in escrow in advance of high school graduation. Students must take English, physical education and senior electives required for graduation. They would then be permitted, on evidence of college registration, to leave school to attend classes during the hours they would normally have been attending high school.

FIFTH YEAR SCHEDULING OPTION

Students who do not receive a high school diploma after four years of high school have several options including: correspondence courses, 5th year attendance at the high school, and attendance at a post-secondary institution for high school credit. All such courses or programs must have prior approval of the high school administration if a student wishes credit to be applied to high school graduation requirements.

PHYSICAL EDUCATION EXEMPTION POLICY

A student will be required to pass eight semesters of physical education, inclusive of health and safety education, unless a special request for exemption is initiated and approved in accordance with Section 27-6 of The School Code.

It shall be the policy of District #154 that students in grades 11 and 12 may request exemption from physical education for any of the following reasons:

1. The student provides evidence from an institution of higher education that a specific course not included in existing state or local school minimum graduation standards is required for admission. School district staff must verify that student's present schedule and proposed schedule will not permit completion of the needed course.
2. The student lacks courses required by Board of Education policies for graduation.
3. The student participates in a varsity sport or marching band. The PE Exemption is valid during the semester the activity takes place.

A student granted exemption under provisions one or two above may replace the physical education class with a course. Every student excused from physical education course requirements will be provided with a schedule, which meets minimum course load requirements.

EARLY RELEASE OR LATE START POLICY

Students may register for early release or late start for their senior year. The ability to participate in early release or late start is a privilege for students. A student **must** have a cumulative GPA of a 10.0 to register for early release or late start. If a student is performing poorly in an academic course, the early release or late start may be removed for the remainder of the semester. Late start or early release may also be denied or revoked for disciplinary reasons.

SCHEDULE CHANGES

Prior to Class Attendance: Students registration is completed in the spring and is to be considered **FINAL**. **School initiated** schedule changes may be made prior to school opening or during the school year. The school reserves the right to cancel any course that does not reach proper registration levels or to make adjustments due to class size. The student will be notified when this occurs.

After Course Attendance Has Begun: **Parent initiated** requests must be in writing and include the changes desired and the reason for changes. These rare requests require administrative approval and be completed within the first 5 days of the semester. After the first 5 days of the semester and prior to the start of week 6 a student may be approved to drop a course, and no grade will be recorded. Courses dropped after the 5th week will receive a “WF” grade, unless the change is made at the semester.

Normally, students may only enter a class within the first 5 days of the course. If a faculty member initiates a level change within the same department the students’ grade to date will transfer with them to the new class and will be averaged in to their semester grade. Students receiving an **administrative drop** for non-functional, disruptive behavior in a course will receive a “WF” for the semester. Parents are to be involved in any of the above-mentioned decisions.

CLASS PLACEMENT

To meet individual differences, needs, and interests, the counselors make placement recommendations according to levels where students are capable of performing and learning. Responsibility for placement of students rests with the counselors and teachers. Parents are urged to discuss placement concerns with the students, teacher and counselors.

PREREQUISITE WAIVER

Students who would like to enroll in a course that they have not met the prerequisite should pick up the waiver form from their counselor or downloaded it from our school website. This form should be submitted along with course requests in the spring. In addition, an alternate course should be selected if the request is not granted. All requests must be reviewed and approved by the counselor, department chair of the course, and the principal.

GENERAL INFORMATION

GIFTED EDUCATION

The Illinois School Code, Article 14-A Gifted defines a gifted student as that student whose mental development is accelerated beyond the average or who has demonstrated a specific aptitude or talent and can profit from specially planned educational services to the extent he/she needs them. The educational philosophy of District #154 supports the development of such a gifted program. The philosophy states that teachers shall exert every effort to individualize the approach to each student; recognizing that “each student is important and that each has his/her own interests, abilities, and needs.”

Students, upon enrollment in the district, are assessed through the use of multiple criteria. For qualified students, participation in the gifted program is based on academic achievement, aptitude and teacher recommendations. Students who qualify in grades 9-12 have the opportunity to enroll in a gifted Humanities program, accelerated classes, and independent course offerings. These state-approved areas (verbal reasoning, verbal/numerical composite, abstract reasoning, language usage, and mechanical reasoning) give objective scores to qualify students for Humanities. Student may also qualify by having a score of 95% or higher in two out of these three scores: English, Reading or composite of the EXPLORE, PLAN, or ACT tests.

SPECIAL EDUCATION

Marengo Community High School offers special education programs and services for eligible students. Students may be referred for a case study by faculty or parents. A SST team will determine whether or not the referral necessitates a case study evaluation. The student’s parent or guardian must give written authorization before any testing for eligibility can take place. All students receiving special education instruction and/or services must have an annually developed Individual Education Program (I.E.P.) designed to meet their specific educational needs. Parents are encouraged to work with the school to understand and help develop the I.E.P. When deemed appropriate, a behavioral intervention plan will be developed, too. Copies of the Behavioral Intervention Policy and Guidelines and information on parental rights are presented annually to parents of students receiving special education services and are available at the high school.

PUPIL PERSONNEL SERVICES

Marengo Community High School pupil personnel services are available to students, parents, and teachers. Pupil Personnel Services include counselors, a social worker, and a nurse. Areas of counseling expertise include career, college, and personal and social needs. Teachers, parents and students are encouraged to take advantage of these services. When a student or parent wishes to talk to a counselor, the best procedure is for an appointment to be made ahead of time. However, if the problem is immediate, the student should contact a counselor immediately. The administration urges a student to see counselors concerning such topics as curriculum selection, class failures, test results, home and school adjustments, jobs, college selection, graduation requirements and schedule changes. Through the counseling and testing programs, student preferences, aptitudes, and achievements are studied. Test information is interpreted for students and parents so that they will better understand what can be expected in terms of learning. These facts are also important in aiding students in making realistic decisions.

CAREER PREPARATION IN THE 21st CENTURY

In our rapidly changing world, it's becoming important to focus on career goals early in order to prepare for joining the work force whether one anticipates that to take place immediately after high school or after post-secondary training/schooling. In this high school, efforts are made to help students discover connections between school learning and adult work; gain insight about their own interests, aptitudes and learning styles; reflect on possible education and career options; mix academic and occupational studies to keep open as many options as possible; and to choose and succeed in an accelerated curriculum aimed at preparation in the 21st century. Annually, students and counselors review their educational decisions, which have been developed according to their anticipated career goals.

Students select a career cluster to explore each year based upon career interests. Students participate in small group, large group, and individual Career Exploration during each year of high school. The students are encouraged to select a career cluster to explore each year based upon the current career interests. Information at <http://careerclusters.org/>

The Career Clusters are:

- Agriculture, Food & Natural Resources
- Architecture & Construction
- Arts, A/V Technology & Communications
- Business Management & Administration
- Education & Training
- Finance
- Government & Public Administration
- Health Science
- Hospitality & Tourism
- Human Services
- Information Technology
- Law, Public Safety, Corrections & Security
- Manufacturing
- Marketing
- Science, Technology, Engineering & Mathematics
- Transportation, Distribution & Logistics

POST-SECONDARY OPTIONS

If students plan to seek education beyond high school, they should consult the entrance requirements of schools in which they are interested. This will enable them to plan their schedules in order to fulfill specific requirements. Any questions that may arise concerning the proper sequence of courses for specific programs should be discussed with a counselor. Post-secondary education or training may include the following:

Apprentice Programs
 Armed Services
 Technical/Trade Schools
 Two-Year Colleges
 Four-Year Colleges/Universities

STUDENT ACTIVITIES/ORGANIZATIONS, RECOGNITION PROGRAM

AFS

The aim of the AFS Club is to promote understanding, knowledge, and friendship among people throughout the world. Membership is open to all students interested in the club's purpose. The club aids, in many ways, the foreign exchange students attending Marengo Community High School. The members have meetings and activities throughout the year.

ATHLETICS-BOYS

FALL- cross country, football, golf, soccer, cheerleading

WINTER- basketball, wrestling, indoor track, cheerleading, Poms/Dance

SPRING- baseball, tennis, track and field

ATHLETICS-GIRLS

FALL- cross country, golf, tennis, volleyball, cheerleading

WINTER- basketball, indoor track, cheerleading, Poms/Dance

SPRING- soccer, softball, track and field

BASS FISHING TEAM

The bass fishing team is open to any student that attends MCHS. The purpose of the bass fishing team is to promote the education of the outdoors, knowledge of the sport of fishing and allow students to have an opportunity to compete in bass fishing contests. The bass fishing team will compete in the IHSA sectional tournament held every spring. The team then can qualify for the state tournament. The team is comprised of two groups of two, with two alternates. Boats will be supplied. Students are expected to supply their own fishing rods, reels, and lures. The bass fishing team will also compete in non-IHSA sanctioned tournaments in either the fall and/or spring.

CHESS CLUB

Chess Club is an academic club where students can learn the art of chess, practice their skills, and compete with others. The goal of Chess Club is mainly to teach the skills necessary to be successful in chess and life: concentration, problem-solving, foresight, and creative thinking. During each meeting, participants are challenged to solve unique chess puzzles and then apply the strategic lesson to a game against fellow players.

COLOR GUARD

See Band course description.

DRAMA PRODUCTIONS

M.C.H.S. sponsors one play in the fall and one musical in the spring. Students can receive experience in not only acting, but also in many technical aspects of drama production.

FFA

The FFA organization is part of the instructional program preparing students for careers in agriculture. FFA stresses leadership by participation in parliamentary procedure and public speaking contests. Judging contests for livestock, soils, dairy, horses, mechanics, horticulture, and farm management emphasizes improvement in skills. The FFA also participates in community projects, as well as recreational activities.

FRESHMEN MENTORING PROGRAM

The Freshman Mentoring Program is a program that provides assistance and support for *every* incoming freshman that passes through the doors of MCHS, to manage a comfortable transition to high school. Freshmen meet with their mentor groups two times a month for the first semester of school. Mentors are juniors and seniors who will act as a friend and a guide to freshmen and teach them all about MCHS. Mentors should possess leadership characteristics, be mature and dependable, outgoing and friendly and be involved in school activities. Mentors need to apply in March, meet the requirements and then go through a selection and interview process.

HOSA (Health Occupations Students of America)

HOSA is a student organization established for the purpose of developing the individual character and leadership potential of our future health care professionals. Planning and implementing several community service projects throughout the year accomplish this mission. Students also have the opportunity to participate in the annual state competition for health care skills and knowledge. Community service projects implemented by HOSA include: sponsoring two blood drives per year; organizing a food drive, which collects generous donations that help needy families in our community; and making presentations at area schools on health-related topics.

ILLINOIS MATH LEAGUE

This is a series of six math contests consisting of six questions each taken on a volunteer basis by students.

MEDIA CLUB

The Media Club is open to any student in the school. To be eligible a student must be presently working one class period per day as a student aide in the media center, or must have previously worked one semester. Students learn a variety of library media skills while serving the school.

MULTICULTURAL CLUB

The Multicultural Club exists as a meeting place for students of different races, cultures and backgrounds to celebrate the diversity of the student population at MCHS. Together, our members will strive to break social fears and ignorance. We will promote cultural values and ethnic diversity through sharing cultural traditions. This group has been created to include diverse individuals to discuss the issues that we are surrounded by daily, and figure out different ways to promote diversity into the school and the Marengo community.

MUSIC

PEP BAND

This group performs music such as swing, jazz, and popular tunes, during basketball games and music concerts. Anyone participating in band may join; additionally, students who play piano or guitar may audition for the group.

PIT ORCHESTRA

The orchestra performs in the spring musical. Members are selected from the band by the band director. Students who play strings may audition for the group (and are strongly encouraged to do so).

HONOR BAND/CHOIR, SOLO & ENSEMBLE

Band and choir students may also be selected to perform in McHenry County Honors Band and Honors Choir, based on dedication and hard work throughout the school year. Additionally, students may participate in the yearly IHSA solo and ensemble contests.

NATIONAL HONOR SOCIETY

Marengo Community High School has a local chapter of the National Honor Society. Students are selected annually, in the fall, from the junior and senior classes on the basis of scholastic achievement (minimum of B+ cumulative grade point average), leadership, character, and service.

P.R.I.D.E. (PEOPLE RECOGNIZING INDIVIDUALS FOR DEVELOPING EXCELLENCE)

This is a semester recognition program based on student achievements in grades, attendance, punctuality, and disciplinary areas. PRIDE card guidelines are based on semester grades and attendance.

A. GRADES

65 points -- A- Average or above (General scale)
 45 points -- B- Average or above (General scale)
 25 points -- C- Average or above (General scale)
 DISQUALIFIED-- Grades below C-

B. ATTENDANCE

45 points -- 0-7 periods absent
 20 points -- 8-10 periods absent
 10 points -- 11-14 periods absent
 DISQUALIFIED-- 15 or more periods absent

C. PROMPTNESS

45 points -- 0-1 tardy
 20 points -- 2 tardies
 10 points -- 3 tardies
 DISQUALIFIED --4 or more tardies

PRIDE CARD CATEGORIES

135 OR MORE POINTS = **GOLD** card
 105-134 points = **MAROON** card
 75-104 points = **WHITE** card
 DISQUALIFIED – for discipline referral, SCAP or O.S.S.
 DISQUALIFIED – if you are disqualified in A, B, or C

Parents may file an appeal for their child's individual situation by filling out an appeal form from Student Services. Appeals may be submitted up to two weeks after the distribution of the Pride cards.

READING CLUB

The reading club is for students who love to read and discuss books. We select books to read and discuss, and students share book recommendations. Meetings are at least twice a month before or after school. We also have a wiki for online book discussions. Anyone can join; it is a great club for booklovers.

SCHOLASTIC BOWL TEAM

This is a Big Northern conference extracurricular activity. Students compete in various academic areas on varsity or frosh/soph levels, as well as the state tournament.

SKILLS USA

SKILLS USA is the only organization for students in technical, skilled and service careers. Students will develop technical, academic, and employability skills; the skills that not only help to get a job but also to have a successful career. They will have the opportunity to demonstrate skills and be recognized for them through competitive activities in occupational areas and leadership at the regional, state and national levels. Students will increase their awareness of quality job practices and attitudes, and increase the opportunities for employer contact and eventual employment.

STUDENT COUNCIL

The student council, an important school organization, represents the entire student body. Ten representatives are elected in April from each class. The student council body in a separate election in April elects the student council president and vice president. Entering freshmen elect representatives in September. All members serve for the school year. Each student, although not a member of the student council, is a part of this organization because it is conducted for the good of every student. The student council helps to promote school organizations, homecoming activities, assembly programs, orientation programs, Christmas programs, and other activities of this nature.

WYSE (WORLDWIDE YOUTH IN SCIENCE AND ENGINEERING)

This is a series of competitions involving a team of fourteen students testing in the areas of Math, English, Chemistry, Physics, Biology, Graphics, and Computer Fundamentals. Levels include regional, sectionals, and state finals.

YEARBOOK

Membership on the Marengo Community High School yearbook staff is available to any student. The editors are chosen by the adviser from staff members who have shown superior journalistic and leadership qualities. The staff is chiefly juniors and seniors, but underclassmen are eligible for staff positions. Staff members are selected by the adviser and editors from students who make it known that they desire to work on the yearbook and who have journalistic agility. Knowledge of digital design is a benefit for staff members and a requirement for editors.

MARENGO COMMUNITY HIGH SCHOOL COURSE LISTINGS

COURSE	GRADES	LEVELS	LENGTH	CREDIT	PREREQUISITES
<u>AGRICULTURAL SCIENCE CURRICULUM</u>					
Introduction To Agricultural Industry	9 10	G	Y	1	
Agricultural Science	10 11 12	G	Y	1	
Supervised Agricultural Experience	10 11 12	G	Y	1	Intro to Ag.
Horticultural Production & Greenhouse Management	10 11 12	G	Y	1	(2012-2013)
Landscaping & Turf grass Management	10 11 12	G	Y	1	(2013-2014)
Agricultural Power I-Small Engines	10 11 12	G	SEM	0.5	
Agricultural Power II- Engines	11 12	G	SEM	0.5	(2012-2013) Ag Power I
Agricultural Machinery Service I-Welding	10 11 12	G	SEM	0.5	(2013-2014)
Agricultural Machinery Service II-Repair	10 11 12		SEM	0.5	(2013-2014)
Animal Science	11 12	G	Y	1	(2013-2014)
BSAA-Animal & Plant Science	10 11 12	G	Y	1	
Independent Study-Vocational	12	G	Y	1	Completion of sequence
<u>BUSINESS CURRICULUM</u>					
Orientation To Business & Technology Concepts	9 10 11 12	G	SEM	.5	
Computer Applications	9 10	G	SEM	.5	Required
Marketing	9 10 11 12	G	SEM	.5	Orient to Business
Accounting I	10 11 12	G	Y	1	
Accounting II	11 12	H	Y	1	Accounting I
Independent Study-Vocational	12	G	Y	1	Completion of sequence
TECS I, II, III, & IV	9 10 11 12	G	Y	1	Read course description
<u>ENGLISH CURRICULUM</u>					
ELL-English	9 10 11 12	G	Y	1	Language eligibility
Humanities	9 10 11 12	H	Y	1	Gifted Criteria
Practical English I, II, III, IV	9 10 11 12	G	Y	1	I.E.P.
Basic English I	9	G	Y	1	
English I, II, III	9 10 11	G H	Y	1	
Senior Literature**	12	G	2 SEM.	1	
English Literature AP**	12	H	Y	1	Need ACT of 21
Speech Communication**	11 12	G	SEM	.5	Min."C" ave. in English
College Writing**	11 12	H	SEM	.5	Min."C" ave. in English
Creative Writing**	11 12	G	SEM	.5	Min."C" ave. in English

***Meets Senior English requirement when taken in Senior year.*

FAMILY & CONSUMER SCIENCE CURRICULUM

Introduction To Family & Consumer Science	9 10	G	S	.5	Taken no other Family & Consumer Science course
Foods & Nutrition I	10 11 12	G	SEM	.5	
Foods & Nutrition II	10 11 12	G	SEM	.5	Foods & Nutrition I
Foods & Nutrition III	11 12	G	Fall SEM	.5	Foods & Nutrition I and II
Foods & Nutrition III-WORK	12	G	Spring SEM	.5	Foods & Nutrition I and II
Clothing & Textiles I	10 11 12	G	SEM	.5	
Clothing & Textiles II	10 11 12	G	SEM	.5	Clothing & Textiles I
Child Development	9 10 11 12	G	SEM	.5	
Child & Day Care Occupation I	11 12	G	Y	2	min."C" average in Child Dev.(meets 2 periods)
Child & Day Care Occupation II	12	G	Y	2	min."C" average in Child and Day Care I (meets 2 periods)
Adult Living	11 12	G	SEM	.5	
Living Environments	11 12	G	SEM	.5	(2013-2014)
Parenting	11 12	G	SEM	.5	(2012-2013)
Resource Management	12	G	SEM	.5	
Independent Study-Vocational	12	G	Y	1	Completion of Sequence

FINE ARTS CURRICULUM

Art Fundamentals	9 10 11 12	G	Y	1	
Drawing I	10 11 12	G	SEM	.5	Art Fundamentals
Drawing II	10 11 12	G	SEM	.5	Art Fundamentals
Digital Design I	10 11 12	G	SEM	.5	Art Fundamentals
Digital Design II	10 11 12	G	SEM	.5	Dig. Design I
Painting I	10 11 12	G	SEM	.5	Art Fundamentals
Painting II	10 11 12	G	SEM	.5	Art Fundamentals
Painting III	11 12	G	SEM	.5	Painting I or II
Painting IV	11 12	G	SEM	.5	Painting I or II
Ceramics	10 11 12	G	SEM	.5	Art Fundamentals
Photography	10 11 12	G	SEM	.5	Art Fundamentals
Photography II	10 11 12	G	SEM	.5	Art Fundamentals & Photo
Sculpture	10 11 12	G	SEM	.5	Art Fundamentals
Studio Art	12	H	Y	1	Art Fund., 2 studio classes, Dept. Approval
Band	9 10 11 12	G	Y	1	
Percussion Band	9 10 11 12	G	Y	1	
Choir	9 10 11 12	G	Y	1	
Colorguard	9 10 11 12	G	SEM	.5	Auditions
Music History	11 12	G	SEM	.5	
Music Theory	11 12	G	SEM	.5	Band or Choir
Drama	10 11 12	G	SEM	.5	(2013-2014)
Acting I	10 11 12	G	SEM	.5	Drama or play involvement (2012-2013)
Stagecraft	10 11 12	G	SEM	.5	Drama or play involvement (2013-2014)
Performance Technology	10 11 12	G	SEM	.5	Drama or 40 hrs. play involvement (2012-2013)

WORLD LANGUAGE CURRICULUM

Spanish I	9 10 11 12	G	Y	1	
Spanish II	10 11 12	G	Y	1	Spanish I
Spanish III	11 12	H	Y	1	Spanish II
Spanish IV	12	H	Y	1	Spanish III
Mandarin Chinese I	9 10 11 12	G	Y	1	
Mandarin Chinese II	10 11 12	G	Y	1	Mandarin Chinese I
Mandarin Chinese III	11 12	H	Y	1	Mandarin Chinese I and II

HEALTH OCCUPATION CURRICULUM

Health Occupation I	10 11 12	G	SEM	.5	
Health Occupation II	10 11 12	G	SEM	.5	min."C" ave. in Health Occ. I
Basic Nurse Assistant Training Program	11 12	G	SEM	1	min."C" average in Health Occ. I & Health Occ. II Dual credit course-MCC (2 periods in 1 semester)
Independent Study-Vocational	12	G	Y	1	Completion of Sequence

INDUSTRIAL & MANUFACTURING TECHNOLOGY CURRICULUM**DRAFTING PATHWAY**

Computer Aided Drafting & Design I	10 11 12	G	SEM	.5	Prerequisite Intro to Proj.Des.
Computer Aided Drafting & Design II	10 11 12	G	SEM	.5	C.A.D.D. I
Architectural Drafting	10 11 12	G	Y	1	C.A.D.D. I
Drafting Occupations	11 12	G	Y	1	C.A.D.D. I
Independent Study-Vocational	12	G	Y	1	Completion of Sequence
3D Computer Graphics	10 11 12	G	S	.5	C.A.D.D. I & II

CONSTRUCTION TECHNOLOGY PATHWAY

Intro to Project Design	9 10 11 12	G	SEM	.5	
Carpentry Technology	10 11 12	G	SEM	0.5	
Construction Technology	11 12	G	Y	1	Construction Tech I
Independent Study-Vocational	12	G	Y	1	Completion of Sequence

MANUFACTURING TECHNOLOGY PATHWAY

Introduction To Manufacturing & Welding	9 10 11 12	G	SEM	.5	
Manufacturing Technology	10 11 12	G	SEM	.5	Intro to Manf. & Welding
Manufacturing Occupations	11 12	G	Y	1	Manufacturing Tech or min."C" average in Intro to Industrial Tech
Welding Fabrication	11 12	G	Y	1	Ag Mach. Ser I
Independent Study-Vocational	12	G	Y	1	Completion of Sequence

AUTOMOTIVE TECHNOLOGY PATHWAY

Auto Service Occupations	11 12	G	Y	1	Sm Gas Eng or Ag Power I
Auto Body/Collision Repair	12	G	Y	2	Auto Service Occ.
Independent Study-Auto II	12	G	Y	2	Auto Body Collision or Auto Service Occupations (2 Period Block)

MATHEMATICS CURRICULUM

Practical Math I	9	G	Y	1	I.E.P.
Life Skills Math	9 10 11 12	G	Y	1	I.E.P.
Practical Algebra & Geometry	10 11 12	G	Y	1	I.E.P.
Practical Geometry	11 12	G	Y	1	I.E.P.
Algebra I Block	9 10 11 12	G	Y	2	Note: 1 credit Math & 1 credit elective
Algebra I	9 10 11 12	G	Y	1	
Unified Geometry	9 10 11 12	H	Y	1	Algebra I (recommend "B" average or higher)
Plane Geometry	10 11 12	G	Y	1	Algebra I
Algebra II	10 11 12	G/H	Y	1	Algebra I, Plane or Unified Geometry
Algebra III	11 12	G	Y	1	Algebra II
Statistics AP	11 12	H	Y	1	Algebra II-H
Pre-Calculus	11 12	H	Y	1	Algebra II
Calculus-AB AP	12	H	Y	1	Pre-Calculus

PHYSICAL EDUCATION CURRICULUM

Zero Hour PE	11 12	G	Y	1	Not in GPA
PE	9 10 11 12	G	Y	1	Not in GPA
Life Skills Health	10	G	SEM	.5	I.E.P.
Driver Education Classroom	9		QUARTER	.25	Pass 8 classes in previous 2 semesters
Health	10	G		.5	With PE Class

SCIENCE CURRICULUM

Practical Science	9 10	G	Y	1	I.E.P. (2013-2014)
Practical Biology	9 10	G	Y	1	I.E.P. (2012-2013)
Physical Science	9	G	Y	1	
Biology	9 10	G	Y	1	
Earth Science	10 11 12	G	Y	1	
Environmental & Biological Issues (EBI)	11 12	G	Y	1	2 yrs of Science 1 being Biology & Teacher recommendation
Chemistry	10 11 12	G	Y	1	Algebra I with "C" average
Accelerated Chemistry	10 11 12	H	Y	1	"B" average or better in Algebra I and Biology & Teacher recommendation
Chemistry AP	11 12	H	Y	1	"A" average in Chemistry or "B" average in Acc Chemistry & Teacher recommendation & summer prep
Advanced Biology	11 12	H	Y	1	Biology and Chemistry
Physics	11 12	H	Y	1	Algebra II and Chemistry
Forensic Science	11 12	G	Y	1	Biology, Ag Science or instructor consent
Independent Study-Science	12	H	Y	1	Chem AP, ADV Bio, Physic (2 of 3 req.) & dept. approval

SOCIAL STUDIES CURRICULUM

Global Studies	9 10	G	Y	1	
Practical Social Studies	11 12	G	Y	1	I.E.P. (2012-2013)
Practical U.S. History	11 12	G	Y	1	I.E.P. (2013-2014)
U.S. History	11	G	Y	1	
U.S. History AP	11	H	Y	1	“B” cum. GPA
World Civilizations	9 10 11 12	G	Y	1	
Illinois History	10 11 12	G	SEM	.5	Ave. reading level
Current Issues	11 12	G	SEM	.5	
Sociology	11 12	G	SEM	.5	Ave. reading level
Psychology	11 12	G	SEM	.5	Ave. reading level
Macroeconomics AP	11 12	H	S or Y	.5/1	(starting 2011-2012) Any business class
American Government/Civics	12	G	SEM	.5	

WORK-RELATED EXPERIENCES

Resource Study Skills	9 10 11 12	G	Y	1	I.E.P.
Practical Life Skills I, II, III, IV	9 10 11 12	G	Y	1	I.E.P.
Vocational Occupations	10 11 12	G	Y	1	I.E.P.

ADDITIONAL COSTS

Students are to note that certain courses taken in the vocational and art areas may have additional student-related costs for specific projects required by the instructor. Examples of this may include, but not limited to, furniture, materials for paintings, clothing, and foods.

AGRICULTURAL SCIENCE CURRICULUM

INTRODUCTION TO AGRICULTURAL INDUSTRY 301/302 (9,10) (YEAR)(1 CREDIT - G)

This course introduces students to the various Career Development Events the FFA has to offer and teaches them to keep a Supervised Agricultural Experience. Only students interested in FFA should take this course. Students are required to participate in on Section FFA event during the year.

SUPERVISED AGRICULTURAL EXPERIENCE 303/304 (10,11,12) (YEAR) (1 CREDIT - G):

This course is for students that want to be members of FFA but do not have room in their schedule for an Agriculture class. Students will develop and conduct a Supervised Agriculture Experience. Students will be required to verify their experiences by keeping written or computerized records including: business agreements, budgets, inventories, daily activities, hours worked, income and expenses, total earnings, depreciation, and net worth. Instructor supervision will be conducted in the student's home or place of employment. SAE records should be evaluated at least once per month.

PREREQUISITE: Introduction to Agricultural Industry

LANDSCAPING & TURFGRASS MANAGEMENT 311/312 (10,11,12) (YEAR) (1-CREDIT - G)

This advanced course focuses on the landscape, nursery, and turf segments of the horticulture industry. Units of study include: identifying landscape plants, designing landscape plans, hardscape construction techniques, and installing landscape plants. Also included are nursery production, turfgrass production, small engine repair, and maintenance of existing landscapes. Agribusiness units will cover calculating prices for work, managing a horticulture business, advertising, and sales. Improving computer and workplace skills will be a focus.

Offered In 2013-2014 (alternate years)

HORTICULTURE PRODUCTION & GREENHOUSE MANAGEMENT 315/316 (10,11,12) (YEAR)

(1 CREDIT - G)

This course provides students with an introduction to the following areas of study: greenhouse crops, nursery crops, floral arranging, landscape designing, and vegetable production. The course includes selected laboratory experiments and "hands-on" projects to reinforce classroom instruction.

Offered In 2012-2013 (alternate years)

AGRICULTURAL POWER I (SMALL GAS ENGINES) 319 (10,11,12) (SEMESTER) (1/2 CREDIT - G)

This course is the beginning course in the study of internal combustion engines. Students will learn the function and service requirements for various engines and parts. Laboratory (shop) experience shall include disassembly, measurement, and reassembly techniques common to 2 and 4 stroke cycle engines. Students will learn how to use common hand tools and service manuals while practicing shop safety. A strong emphasis is placed on developing workplace skills in order to prepare the students for the working world. Students will be permitted to bring in their own projects or a project will be assigned.

AGRICULTURAL POWER II (ENGINES) 320 (10,11,12) (SEMESTER) (1/2 CREDIT - G)

This course is the second course in the study of internal combustion engines. Students will learn how to trouble shoot and diagnose various tractor engine problems. Laboratory (shop) experience shall include disassembly, measurement, reassembly, and troubleshooting techniques common to tractor engines. Students will be permitted to bring in their own tractors and overhaul the engine. Students must purchase all of their own parts. Limited space available, some tractors may have to stay outside for an extended period of time during this course. A strong emphasis is placed on developing workplace skills in order to prepare the students for the working world.

PREREQUISITE: Agricultural Power I, Offered in 2012 – 2013 (Alternate years)

AGRICULTURAL MACHINERY SERVICE I (WELDING) 323 (10,11,12) (SEMESTER) (1/2 CREDIT - G)
 This course teaches students the basics of Oxy-Acetylene, Arc, MIG, TIG welding and Blue Print Reading. Students will learn basic principles of maintenance welding and operation of the Oxy-acetylene torch. Students will perform welds in the flat, horizontal, vertical up, vertical down and overhead positions. Upon completion of all required tasks, students will be permitted to bring in small projects for repair. Instructor approval needed before bringing in any project. A strong emphasis is placed on developing workplace skills in order to prepare the students for the working world. Offered in 2013 – 2014 (Alternate years)

AGRICULTURAL MACHINERY SERVICE II (REPAIR) 324 (10,11,12) (SEMESTER) (1/2 CREDIT - G)
 This course focuses on preventative maintenance and repair of farm equipment. Repair and maintenance of tractors, and other farm machinery will be taught in this course. Systems that will be taught but not limited to are: electrical, cooling, lubrication, brakes, steering, hydraulic, and clutch/transmission. Students will be permitted to bring in their tractors but space is limited and some tractors may have to stay outside for an extended period of time. Students must purchase all of their own parts. A strong emphasis is placed on developing workplace skills in order to prepare the students for the working world.

PREREQUISITE: Agricultural Machinery Service I Offered in 2013 – 2014 (Alternate years)

BIOLOGICAL SCIENCE APPLICATIONS IN AGRICULTURE (BSAA) ANIMAL AND PLANT SCIENCE 328/329 (10,11,12) (YEAR) (1 – CREDIT - G)

Animal and Plant Science is a course designed to reinforce and extend student's understanding of science by associating scientific principles and concepts with application in agriculture. Students will examine major biological concepts through laboratory exercises and experiments. Sample topics include: Growth and Development of Animals, nutrition, immunity systems, and plant growth. This lab course is designed to increase relevance through application for students. This course meets the biology requirement for students following the agriculture sequence.

ANIMAL SCIENCE-325/326 (11,12) (YEAR) (1 CREDIT - G)

Students learn about the anatomy of domestic livestock, animal genetics, reproduction, nutrition, and ration development. The meat science industry will be explored in addition to a study of companion animals and the science of veterinary medicine. Offered in 2013-2014 (alternate years)

INDEPENDENT STUDY-VOCATIONAL-649/650 (12) (YEAR) (1 CREDIT - G)

This is an opportunity for vocationally gifted students to practice and increase skills in their chosen field.

PREREQUISITE: Recommendation of instructor, approval of Department Chair, completion of sequence.

BUSINESS CURRICULUM

ORIENTATION TO BUSINESS & TECHNOLOGY CONCEPTS 401 (9,10,11,12) (SEMESTER)

(1/2 CREDIT - G)

Units of study will include understanding basic business and economic principles; identifying types of businesses; organizing and using financial data; contrasting management theories; understanding the composition of the marketing mix; demonstrating an understanding of business administration; and applying production data for decision making.

MARKETING 402 (9,10,11,12) (SEMESTER) (1/2 CREDIT - G)

This course exposes students to the many marketing functions that can be applied in bringing products from the producer to the consumer. Experiences learned in class include: identifying markets; channels of distribution; pricing strategies; receiving and storing merchandise; selling merchandise; performing merchandising duties; preparing merchandise displays; performing clerical related activities; and performing accounting related activities.

PREREQUISITE: Orientation To Business & Technology Concepts

COMPUTER APPLICATIONS 404 (9,10) (SEMESTER) (1/2 CREDIT - G)

Emphasis is placed on facets of 21st century computer technology skills as they relate to communication and collaboration within the educational setting including information storage and retrieval; word processing, spreadsheet, and presentation program options with instruction in the basics of these programs; Web 2.0 tools such as websites for note taking, presentation options, concepts mapping, website developments, e-portfolio creation, and others as they technology advances. These skills will be reinforced with relevant projects that reinforce 21st century workplace skills. **REQUIRED COURSE.**

ACCOUNTING I 415/416 (10,11,12) (YEAR) (1 CREDIT - G)

Students learn the manual and electronic methods of the double entry method of accounting. Instruction includes information on keeping financial records, summarizing them for convenience and interpretation, and analysis for management decision-making. Simulations with business papers will be emphasized.

ACCOUNTING II 419/420 (11,12) (YEAR) (1 CREDIT - H)

This course develops deeper knowledge of the principles of accounting with emphasis on financial statements and records. Specialized fields of accounting are explored. Simulated business conditions will be taught. A technical background is provided for college-bound students, as well as those who wish vocational preparation.

PREREQUISITE: Accounting I

INDEPENDENT STUDY-VOCATIONAL 649/650 (12) (YEAR) (1 CREDIT - G)

This is an opportunity for vocationally gifted students to practice and increase skills in their chosen field.

PREREQUISITE: Recommendation of instructor, approval of Department Chair, completion of sequence.

TECS I – TECHNOLOGY EQUIPMENT AND COMPUTER SERVICES 409/410 (9,10,11,12) (YEAR)**1/2 credit for TECS 1/2 credit for IVHS per class - G**

In this course, students will be introduced to the fundamentals of computers, networks and other technology equipment. They will experience hands on hardware and software troubleshooting relevant to today's networking infrastructures and computer service industry. In class time will focus on problem based learning experiences and will offer students the opportunity to learn from practical experiences. Experience will also include network layout basics and computer imaging. By combining Illinois Virtual School courses with hands on practical experiences, students will be provided with life skills useful beyond high school. Simultaneously with this course students need to be enrolled in Networking Basics through the Illinois Virtual School program. Students completing TECS I through IV will have A+ certification exam exposure with an opportunity to test after their senior year.

TECS II – TECHNOLOGY EQUIPMENT AND COMPUTER SERVICES 411/412 (10,11,12) (YEAR)**1/2 credit for TECS 1/2 credit for IVHS per class - G**

This course is designed to extend initial experiences from the TECS I course. Students will continue to develop skills with computers, networks and other technology equipment utilizing hands on activities. Problem based learning will be the underlying instructional process and students will experience utilization of ticketing systems and practices in network monitoring. Students will also learn several processes of creating how to or instructional media. By combining Illinois Virtual School courses with hands on practical experiences, students will be provided with life skills useful beyond high school. Simultaneously with this course students need to be enrolled in Visual Basic course through the Illinois Virtual School program. Students completing TECS I through IV will have A+ certification exam exposure with an opportunity to test after their senior year.

TECS III – TECHNOLOGY EQUIPMENT AND COMPUTER SERVICES 413/414 (11,12) (YEAR)**1/2 credit for TECS 1/2 credit for IVHS per class - G**

This course is designed to extend initial experiences from the TECS II course. Students will continue to develop skills with computers, networks and other technology equipment utilizing hands on activities. Problem based learning will be the underlying instructional process and students will experience utilization of ticketing systems and practices in network monitoring. Students will also learn about network security and disaster recovery. By combining Illinois Virtual School courses with hands on practical experiences, students will be provided with life skills useful beyond high school. Simultaneously with this course students need to be enrolled in at least one of the following courses through the Illinois Virtual School program. (Intro to web page design, Intro to HTML, CCNA Preparation or Assembly language programming) Students completing TECS I through IV will have A+ certification exam exposure with an opportunity to test after their senior year.

TECS IV – TECHNOLOGY EQUIPMENT AND COMPUTER SERVICES 417/418 (11,12) (YEAR)**1/2 credit for TECS 1/2 credit for IVHS per class - G**

This course is designed to extend initial experiences from the TECS III course. Students will continue to develop skills with computers, networks and other technology equipment utilizing hands on activities. Problem based learning will be the underlying instructional process and students will experience utilization of ticketing systems and practices in network monitoring. Students will also learn project planning and development processes. By combining Illinois Virtual School courses with hands on practical experiences, students will be provided with life skills useful beyond high school. Simultaneously with this course students need to be enrolled in at least one of the following courses through the Illinois Virtual School program. (Intro to web page design, Intro to HTML, CCNA Preparation or Assembly language programming) Students completing TECS I through IV will have A+ certification exam exposure with an opportunity to test after their senior year.

ENGLISH CURRICULUM

Honors sections of English will study and practice the same skills as non-honors English. However, Honors sections will study at a much higher level in all areas. Honors sections will read much more difficult texts and may read more texts. Honors writers are expected to write at a higher level with more precision in use of grammar, vocabulary, and style. Honors speakers are expected to speak in a more professional manner. Honors sections will utilize less class time for work, and honors students are expected to complete more work on their own time. Honors students must be aware that the course will develop the same skill sets, but at a higher level. Honors sections will also be exposed to more analytical skills because the honors group is a college-prep for students pursuing post-secondary education

ELL-ENGLISH 003/004 (9,10,11,12) (YEAR) (1 CREDIT - G)

This course is designed as a transitional English course for eligible students whose primary language is not English.

PREREQUISITE: language eligibility

HUMANITIES 077/078 (9,10,11,12) (YEAR) (1 CREDIT - H)***

This course is available at all grade levels to students who meet the identification criteria developed for talented students. Students will learn to evaluate the ideas expressed in a wide variety of literature, art, music, and drama from all periods of Western Civilization. Students will demonstrate their understanding by creating projects in art, performance, and writing. Summer reading required.

Students enrolled in Humanities will be required to read two (2) novels and complete corresponding assignments over the summer. Failure to complete the assignment(s) will NOT result in being removed from the class but will have an adverse affect on the grade in the class.

****Note – Writing intensive course **If a senior you are required to take the AP Eng. Lit exam in May.**

PREREQUISITE: meet "Gifted" criteria

PRACTICAL ENGLISH I 005/006, II 021/022, III 037/038, IV 057/058 (9,10,11,12) (YEAR) (1 CREDIT - G)

These courses are designed for students whose language arts skills are significantly below grade level. These students will develop and improve skills and understanding of basic English, reading, and writing.

PREREQUISITE: I.E.P.

BASIC ENGLISH I 009/010 (9) (YEAR) (1 CREDIT - G)

This course is designed for students whose reading and language ability is functionally below grade level. The students in this course will improve reading, grammar, vocabulary, spelling and composition skills.

****Note – Writing intensive course**

ENGLISH I 013/014 (9) (YEAR) (1 CREDIT - G)**ENGLISH I 017/018** (9) (YEAR) (1 CREDIT - H)* **

English I is a study of literature, writing, speech, and vocabulary. Students will read a variety of literature including: novels, short stories, journal articles, magazine articles, and newspaper articles. They will write a variety of assignments including journals, short-writes, essays, researched presentations, and various other assignments. Students will speak on various related topics in various settings. During the year, students will improve their ability to read, comprehend, and analyze the readings. They will improve their ability to analyze and decipher words while building their vocabulary. They will also improve their ability to write clear, structured, and stylistic pieces. Finally, they will improve their ability to speak in public and work as part of a team.

**Students enrolled in English I Honors will be required to read one (1) novel and complete a corresponding assignment over the summer. Failure to complete the assignment(s) will NOT result in being removed from the class but will have an adverse affect on the grade in the class.

*An Explore score of 18 composite is strongly recommended for this course.

**Note – Writing intensive course

ENGLISH II 029/030 (10) (YEAR) (1 CREDIT - G)**ENGLISH II 033/034** (10) (YEAR) (1 CREDIT - H)**

English II is a study of literature, writing, speech, and vocabulary. Students will read a variety of literature including: novels, short stories, journal articles, magazine articles, and newspaper articles. They will write a variety of assignments including journals, short-writes, essays, researched presentations, and various other assignments. Students will speak on various related topics in various settings. During the year, students will improve their ability to read, comprehend, analyze, and manipulate the readings. They will improve their ability to analyze and decipher words while building their vocabulary. They will also improve their ability to write clear, structured, and stylistic pieces. Finally, they will improve their ability to speak in public and work as part of a team.

Students enrolled in English II Honors will be required to read one (1) novel and complete a corresponding assignment over the summer. Failure to complete the assignment(s) will NOT result in being removed from the class but will have an adverse affect on the grade in the class.

**Note – Writing intensive course

ENGLISH III 045/046 (11) (YEAR) (1 CREDIT - G)**ENGLISH III 053/054** (11) (YEAR) (1 CREDIT - H)**

Students will learn the major themes expressed in a variety of American literature. They will learn the relationships between American literature and events in American history, and they will express their understanding orally and in writing. Students will be able to identify the contributions of such authors as Nathaniel Hawthorne, Emily Dickinson, Walt Whitman, and Mark Twain as well as many others. In composition the students will learn to fully develop a thesis and improve the style of their writing. They will write a variety of assignments including journals, short-writes, essays, researched presentations, and various other assignments. Students will speak on various related topics in various settings. Finally, they will improve their ability to speak in public and work as part of a team.

Students enrolled in English III Honors will be required to read one (1) novel and complete a corresponding assignment over the summer. Failure to complete the assignment(s) will NOT result in being removed from the class but will have an adverse affect on the grade in the class.

**Note – Writing intensive course

SENIOR LITERATURE 065/066 (12) (2 SEMESTERS) (1/2 CREDIT/SEMESTER - G)

Senior Literature is an exploration of the theme of Self within the world. Students will explore themes of self, self within community, self within nation, and self within the global community in literature, writing, and speaking. Students will read a variety of literature including: novels, short stories, journal articles, magazine articles, and newspaper articles. They will write a variety of assignments including journals, short-writes, essays, researched arguments, personal statements, and various other assignments. Students will speak on various related topics in various settings. During the year, students will improve their ability to read, comprehend, analyze, and manipulate the readings. They will improve their ability to analyze and decipher words while building their vocabulary. They will also improve their ability to write clear, structured, and stylistic pieces. Finally, they will improve their ability to speak in public and work as part of a team. All of these skills will apply to their future careers and future lives.

(Meets Senior English Requirement)

ENGLISH LITERATURE AP 071/072 (12) (YEAR) (1 CREDIT - H)*

Students will read and analyze some of the masterpieces of world literature such as Oedipus the King, Dante's Inferno, and Hamlet, as well as contemporary work by such authors as Tim O'Brien, Zora Neale Hurston, and David Guterson. They will write extensively using the literature as the basis for their essays. An intensive poetry study will also be included as part of the preparation for the English Literature AP examination. Students are required to take the May AP exam.

Students enrolled in English Literature AP will be required to read two (2) novels and complete corresponding assignments over the summer. Failure to complete the assignment(s) will NOT result in being removed from the class but will have an adverse affect on the grade in the class.

*An A.C.T. composite score of 21 is strongly recommended for this course.

(Meets Senior English Requirement)

SPEECH COMMUNICATION 076 (11,12) (SEMESTER) (1/2 CREDIT - G)

This course will build on the fundamentals of speech introduced in sophomore English and include the study of audience/speaker analysis, media literacy, interpersonal/ intrapersonal communication as well as how to prepare, write, and deliver a variety of speeches on a more advanced level.

PREREQUISITE: minimum "C" average in English classes

(Meets Senior English Requirement) when taken senior year

COLLEGE WRITING 073 (11,12) (SEMESTER) (1/2 CREDIT - H)

This course has been designed to resemble an advanced college writing class. The main goals of this course are to improve a student's positive writing abilities and to prepare them for the world of advanced collegiate writing. The purpose of the class is to enable students to engage successfully and comfortably in any type of writing customarily done far beyond high school by using a rigorous writing process. This course will also focus on improving general writing skills and on the revision and editing practices that are necessary to achieve excellent writing. Students will also study essayists in different forms while applying this study to writing their own various essays.

**Note – Writing intensive course

PREREQUISITE: minimum "C" average in English classes

(Meets Senior English Requirement) When taken senior year

CREATIVE WRITING 074 (11,12) (SEMESTER) (1/2 CREDIT - G)

Students will learn the elements of fiction, essay, poetry, and drama. They will demonstrate their understanding by writing examples of each genre. Students will do both long-term and short-term writing assignments.

PREREQUISITE: minimum "C" average in English classes **Note – Writing intensive course
(*Meets Senior English Requirement*) When taken senior year

FAMILY AND CONSUMER SCIENCES CURRICULUM

INTRODUCTION TO FAMILY AND CONSUMER SCIENCES 453 (9,10) (SEMESTER)

(1/2 CREDIT - G)

This course is designed for the student interested in exploring and learning basic skills that are useable in everyday life. Hands-on learning is the focus of this class and develops basic skills to help students succeed throughout their high school years. Areas to be explored may include: basic kitchen concepts, basic clothing construction, childcare. This course is recommended as an introduction to all other family and consumer science courses. A strong emphasis is placed on developing workplace skills in order to prepare the students for the working world.

NOTE: students that have taken or are enrolled in any other Family and Consumer Science courses may not take this class.

FOODS AND NUTRITION I 454 (10,11,12) (SEMESTER) (1/2 CREDIT - G)

Through classroom lecture and laboratory experiences students develop knowledge and understanding of basic food principles. Students build on current nutrition knowledge by applying concepts related to their nutritional needs for today and in the future. Areas to be covered are: teamwork, nutritional needs, serving sizes, cooking techniques, baking and pastry, basic food preparation, kitchen organization, safety/sanitation, and family style meals.

FOODS AND NUTRITION II 455 (10,11,12) (SEMESTER) (1/2 CREDIT - G)

This course continues to build on food preparation and presentation skills through classroom lecture and laboratory experiences. Students learn to plan, prepare, and serve nutritional meals. Areas to be covered are: budgeting, meal planning and preparation, culinary arts, international foods and advanced baking and pastry. Discussion on careers in the food industry and nutrition field will be incorporated throughout the course.

PREREQUISITE: Foods and Nutrition I

FOODS AND NUTRITION III 456 (11,12) (FALL SEMESTER) (1 CREDIT - G)

This class is for students who want to be in learn the Foodservice business. Students will experience all aspects of running a foodservice business, including overseeing the management of the facilities for a specific function, catering, and food sales. Students will improve knife skills, safety and sanitation skills, math skills, writing skills, and learn to read and follow instructions closely. A specific focus will be on teamwork and developing leadership traits. The students will be required to take the National Restaurant Association Prostart Level I exam. The class will take place in the high school cafeteria during the first semester during 6th & 7th hours.

PREREQUISITE: Foods and Nutrition I and II

FOODS AND NUTRITION III (WORK) 457 (12) (SPRING SEMESTER) (1 CREDIT - G)

This class is for students who want to be in Foodservice for their chosen career. The class will take place in a restaurant during 6th & 7th hours. Students will experience all aspects of working in a restaurant. Students will improve knife skills, speaking skills, math skills, writing skills, and learn to read and follow instructions closely. The students will contract hours and tasks: culminating in 400 hours of work which will be applicable towards a Prostart National Certificate. The students will take the National Restaurant Association Prostart Exam Level II. *PREREQUISITE:* Passing of the National Restaurant Association (NRA) Level I exam from 1st semester plus permission from Ms. Sager.

CLOTHING AND TEXTILES I 465 (10,11,12) (SEMESTER) (1/2 CREDIT - G)

Students will construct, purchase, care for, and work with fabrics. Broad areas of study will include: textile study, use of patterns, alterations and construction of garments. Career opportunities in clothing and textiles will be introduced.

CLOTHING AND TEXTILES II 466 (10,11,12) (SEMESTER) (1/2 CREDIT - G)

This course offers the students an in-depth look at clothing and textile manufacturing and the fashion industry. Students will provide the materials necessary to make alterations and construct textile projects of increasing skills and difficulties. They will study vocational opportunities and current trends in the textile and fashion industry.

PREREQUISITE: Clothing and Textiles I

CHILD DEVELOPMENT 469 (9,10,11,12) (SEMESTER) (1/2 CREDIT - G)

The student will understand the intellectual, physical, social, and emotional development of children from conception through early childhood. Current childcare topics and information related to careers in the childcare field are incorporated in the course.

CHILD AND DAY CARE OCCUPATIONS I 471/472 (11,12) (YEAR) (2 CREDITS - G)

This course is designed for students interested in a career in early childcare education. Students will complete practical experiences needed for the development of job-related competencies in the on-site facility. Students will work with children in situations that simulate those found in area childcare centers. This class meets for 2 periods.

PREREQUISITE: minimum "C" average in Child Development

CHILD AND DAY CARE OCCUPATIONS II 475/476 (12) (YEAR) (2 CREDITS - G)

This advanced course builds on the skills and knowledge acquired in Child and Day Care Occupations I. Students work as teacher aides in the on-site facility. Students have responsibilities in the areas of classroom management, clerical assistance, preparing teaching materials and planning and teaching activities. This class meets for 2 periods.

PREREQUISITE: Child and Day Care Occupations I

ADULT LIVING 479 (11,12) (SEMESTER) (1/2 CREDIT - G)

This course is designed to assist individuals and families in achieving life satisfaction through responsible participation as adults in the home and community. Emphasis is placed on the development of prevention strategies. The course content includes developing goal setting, coping mechanisms, effective relationships and family crisis.

LIVING ENVIRONMENTS 480 (11,12) (SEMESTER) (1/2 CREDIT - G)

Students will learn how to select, acquire, maintain and manage living environments that meet their needs. The course content includes: goal-setting and decision making, evaluating living space, creating and maintaining living environments, applying housing and home management choices related to changing family/individual and career patterns. Emphasis will be placed on the application of basic management principles as they relate to the environment.

OFFERED IN 2013-2014 (alternate years)

PARENTING 484 (11,12) (SEMESTER) (1/2 CREDIT - G)

This course is designed to help students think through the responsibilities, satisfactions, and stresses of parenthood. Many types of parenting situations are examined. Emphasis will be placed on the work of community agencies that help parents deal with various types of parenting crises. Special attention is given to the importance of readiness for parenthood.

OFFERED IN 2012-2013 (alternate years)

RESOURCE MANAGEMENT 485 (12) (SEMESTER) (1/2 CREDIT - G)

The course content includes the following areas: utilizing resources and consumer information by applying goal-setting and decision-making skills; evaluating use of resources to meet social, physical and psychological needs; maintaining health standards by applying safety information; applying consumer rights and responsibilities in the marketplace; and analyzing resource/consumer management skills necessary for present and future decisions. The course meets the requirement for consumer education instruction.

INDEPENDENT STUDY-VOCATIONAL 649/650 (12) (YEAR) (1 CREDIT - G)

This is an opportunity for vocationally gifted students to practice and increase skills in their chosen field.

PREREQUISITE: Recommendation of instructor, approval of Department Chair, completion of sequence.

FINE ARTS CURRICULUM

ART FUNDAMENTALS 351/352 (9,10,11,12) (YEAR) (1 CREDIT - G)

This course is designed to introduce the student to the fundamentals of art. The student will explore the history of art, develop an understanding of the elements and principles of design and an understanding of art criticism. The student will be introduced to a variety of art techniques and media. The student will create projects that explore the elements and principles of design as well as pieces that relate to art history covered in the course.

DRAWING I 355 II 356 (10,11,12) (SEMESTER EACH) (1/2 CREDIT EACH - G)

Basic drawing skills will be developed with an emphasis on basic form, perspective, still life, figure drawing, creative drawing, and various types of illustration. Students will create drawings using a variety of media including pencil, charcoal, conte, ink, and scratchboard. Historical and contemporary illustrators and their styles will be studied. The class is designed to improve the student's visual skills by emphasizing drawing what can be seen. This is a studio class.

PREREQUISITE: Art Fundamentals

DIGITAL DESIGN I 365 (10,11,12) (SEMESTER) (1/2 CREDIT - G)

This class is an introduction into digital graphic design. The focus of the class will be on using the elements and principles of design while designing on the computer. Students will use Adobe Illustrator, Photoshop, and InDesign while designing projects that will include typographical designs, logos, photo collages, and brochure designs. This class introduces digital design vocabulary as well as computer technology that is used in the workplace. Students will create a digital portfolio of coursework at the end of the course.

PREREQUISITE: Art Fundamentals

DIGITAL DESIGN II 366 (10,11,12) (SEMESTER) (1/2 CREDIT - G)

This course will include advanced digital design techniques using the Adobe Creative Suite programs, the industry standard. Layout of the MCHS yearbook will be done in this course. Language of the digital design world will be learned as well as basic animation and an introduction to web design. Practical applications of digital techniques will be used in real life design projects.

PREREQUISITE: Digital Design I

PHOTOGRAPHY 367 (10,11,12) (SEMESTER) (1/2 CREDIT - G)

This course covers the history of photography, types of cameras and lenses, the various genres of photography, digital photography techniques, as well as black and white film developing. Students will create a digital portfolio of their photographic pieces at the end of the course.

PREREQUISITE: Art Fundamentals; Students must have a working digital camera to take this course, preferably an SLR camera.

PHOTOGRAPHY II 368 (10,11,12) (SEMESTER) (1/2 CREDIT - G)

This course is a continuation of the Photography class building on the student's skills, including composition, digital editing, photo journalism, and building a portfolio. Students will use their skills taking photographs for the MCHS website and yearbook.

PREREQUISITE: Art Fundamentals and Photography I. Students must have a working digital camera to take this course

PAINTING I 359. II 360. III 361, IV 362 (10,11,12) (SEMESTER EACH) (1/2 CREDIT EACH - G)

Creative interpretation and experimentation combined with various painting techniques are the main concern of this course. The student will explore watercolor, tempera, and acrylic painting techniques. Painting III and IV students will be expected to master the painting techniques explored in the prior classes and improve composition and expression. Art historical time periods will be related to work completed in class. This is a studio class.

PREREQUISITE: Art Fundamentals

CERAMICS 363 (10,11,12) (SEMESTER) (1/2 CREDIT - G)

The class will explore various techniques in the use of terra cotta. Hand building techniques will be mastered as the student creates his/her own clay products. Basic wheel throwing techniques will be introduced as well as a variety of glazing techniques. Historical uses of pottery will be studied. This is a studio class.

PREREQUISITE: Art Fundamentals

SCULPTURE 364 (10,11,12) (SEMESTER) (1/2 CREDIT - G)

Sculpture will be explored in three ways: ideas, design, and the technical skills involved in creating sculpture. Students will create sculptures with the understanding of how materials affect the outcome of the final product. Students will explore the following materials: wood, plaster, clay, wire and found objects. An exposure to the history of sculpture will be a part of this class. This is a studio class.

PREREQUISITE: Art Fundamentals

STUDIO ART 371/372 (12) (YEAR) (1 CREDIT - H)

Independent Study is intended to provide those students with superior talent an opportunity to further their personal creative skills. Students will create projects on an independent contractual basis.

PREREQUISITES: Art Fundamentals, two studio classes, art department approval

DRAMA 075 (10,11,12) (SEMESTER) (1/2 CREDIT - G)

Students will learn and explore the basic elements of drama by reading and evaluating plays. They will demonstrate their understanding by writing several evaluations of dramatic works. Theater history will be explored and a research paper and presentation required. Each student will gain practical performance experience through auditioning techniques, pantomime, improvisation, and memorized scene work.

OFFERED IN 2013/2014 (alternate years)

ACTING I 079 (10,11,12) (SEMESTER) (1/2 CREDIT - G)

This course is a one semester elective course offered in alternating years in which students will develop internal and external personal resources related to acting while developing interpersonal awareness and skills. This class will allow students the opportunity to develop acting and interpersonal skills. The course of study includes movement, voice, acting styles, blocking techniques and preparation for performance.

PREREQUISITE: Drama with a B or higher or 40 hours of involvement in high school plays

OFFERED IN 2012-2013 (alternate years)

STAGECRAFT 080 (10,11,12) (SEMESTER) (1/2 CREDIT - G)

This course is a one semester elective course offered in alternating years in which students will develop skills in the areas of theatre safety, design concepts, production, organization, management and utilization and operation of equipment and resources, as they related to set conception, design, use and construction, properties use, allocation and construction, fly-rigging and backdrops, costuming, publicity, ticket sales and house management.

PREREQUISITE: Drama or 40 hours of involvement in high school plays

OFFERED IN 2013-2014 (alternate years)

PERFORMANCE TECHNOLOGY 081 (10,11,12) (SEMESTER) (1/2 CREDIT - G)

This course is a one semester elective course in which students will develop skills in the areas of performance facility safety, design, concepts, production, management, utilization and operation of equipment, and organization as they relate to sound, lighting, special effects and computer technology within a performance setting.

PREREQUISITE: Drama or 40 hours of involvement in high school plays

OFFERED IN 2012-2013 (alternate years)

BAND 651/652 (9,10,11,12) (YEAR) (1 CREDIT - G)

The band performs for football games, concerts, contests, and many other community functions. Students will learn to be proficient on their own instruments, as well as to communicate musically with the whole ensemble. Students will learn music fundamentals, terminology, and music history through the repertoire chosen.

COLORGUARD 661 (9,10,11,12) (FALL SEMESTER) (1/2 CREDIT - G)

The Color Guard is the visual unit in the MCHS Marching Band. The course requires class time during the regular school day and rehearsals 2-3 times per week after school. The group also performs at ALL home football games and many other performances throughout the year that involve the marching band. Enrollment for the class is by audition only. All first year members must attend the TWO clinic sessions and audition session in order to register for the class. Clinics and auditions will be held in the spring semester as scheduled by the instructor. Any and all returning members must attend the second clinic and audition sessions.

PERCUSSION BAND 653/654 (9,10,11,12) (YEAR) (1 CREDIT - G)

This course will include all percussion players. This course provides instrumental ensemble performance for percussion students. The purpose of this course is to teach the students the life-long skill of music. The course of study will be snare, mallets, timpani, auxiliary instruments and marching percussion. The students will be required to participate in all Marching Band events, the Holiday Concert, Beef Dinner, Organizational contest and spring concert. Students are encouraged to participate in solo ensemble and contest.

CHOIR 659/660 (9,10,11,12) (YEAR) (1 CREDIT - G)

The choir performs for concerts, contests, and many other community functions. The students will learn music fundamentals and proper vocal techniques. The students will also learn terminology and music history through the repertoire chosen.

MUSIC THEORY 663 (11,12) (SEMESTER) (1/2 CREDIT - G)

This course is designed to provide students with the skills necessary to write and analyze music. Students will learn basic music terminology and how to write scales and chords. Students will also learn how to analyze pieces of music and, through all the skills taught, write compositions of their own.

PREREQUISITE: Band or Choir

MUSIC HISTORY 664 (11,12) (SEMESTER) (1/2 CREDIT - G)

This course will cover the development of music throughout history. Students will learn how music is related to social and artistic values associated with Western Civilization. Students will be able to understand the different genres of music and what is involved in the creation of each of these. Students will also be able to analyze, critique, and understand the timeline of music history.

WORLD LANGUAGE CURRICULUM**SPANISH I 501/502** (9,10,11,12) (YEAR) (1 CREDIT - G)

This course covers basic fundamentals of the Spanish language. Students will be able to function in a Spanish speaking culture and will demonstrate basic proficiency in listening, reading, writing, and speaking skills in the language. Students will appreciate the diverse and varied cultures within the Spanish speaking world.

SPANISH II 505/506 (10,11,12) (YEAR) (1 CREDIT - G)

This course is a continuation of Spanish I. Students will recognize increased vocabulary and will demonstrate an ability to understand basic conversational settings. Students will use the intermediate vocabulary and grammar to improve writing and will show improved proficiency in listening, reading, and speaking skills. Students will enlarge upon cultural material.

PREREQUISITE: Spanish I

SPANISH III 511/512 (11,12) (YEAR) (1 CREDIT - H)

This course is a continuation of Spanish II. Students will be able to communicate at an advanced intermediate level in the target language. Students will, through the writing process, use improved grammar skills and increased vocabulary to communicate in the target language. Students will also demonstrate an increased awareness of the diverse cultures and histories of the Spanish speaking world.

PREREQUISITE: Spanish II

SPANISH IV 515/516 (12) (YEAR) (1 CREDIT - H)

This course will build on the foundation established in Spanish I-III. This course will refine the student's advanced skills in use of grammar structures. Students will demonstrate an understanding of a variety of types of communication; written, oral, audio. Students will continue the study of the cultures and history of the Spanish speaking world.

PREREQUISITE: Spanish III

MANDARIN CHINESE I 521/522 (9,10,11,12) (YEAR) (1 CREDIT - G)

Listening, speaking, reading, and writing skills are emphasized in this course. Vocabulary memorization and application skills are exercised to provide means for basic communication in Chinese. Vocabulary is presented in a functional way to facilitate utilizing Chinese more quickly. Completion of daily work is essential to success. Learning the Chinese language is very difficult and students should expect a more challenging curriculum.

MANDARIN CHINESE II 523/524 (10,11,12) (YEAR) (1 CREDIT - G)

This course is a continuation of the introductory course and a firm foundation of basic Chinese is required. More intensive work on vocabulary development, grammatical structure, and listening comprehension is experienced in this class. Students further their usage skills by responding to everyday situations. Learning the Chinese language is very difficult and students should expect a more challenging curriculum.

PREREQUISITE: Mandarin Chinese I

MANDARIN CHINESE III 525/526 (11,12) (YEAR) (1 CREDIT - H)

Mandarin Chinese III continues the development of the four major language skills: listening, speaking, reading, and writing. This course also integrates the “5Cs” principles of the National Standards for Foreign Language Education-Communication: Cultures, Comparisons, Connections, and Communities. The course will be conducted primarily in Mandarin Chinese. The teacher will assist students in building communicative skills. A transition from vocabulary-focused instruction to sentence patterns will take place and more time will be devoted to the writing of Chinese characters. Writing skills will continue to progress so that students will be able to describe what is happening around them. Students will be evaluated on their knowledge of Mandarin Chinese language and culture. Students are expected to demonstrate the following skills: expressive interaction in the language; well-organized, creative and accurate writing; factual and interpretive reading comprehension; and a deep understanding of the culture of Chinese-speaking countries.

PREREQUISITE: Mandarin Chinese II

HEALTH OCCUPATIONS CURRICULUM

HEALTH OCCUPATIONS I 551 (10,11,12) (SEMESTER) (1/2 CREDIT - G)

This is an introductory course that explores the health care delivery system, its services and occupations. Students will also be trained in first aid and CPR. Other topics include value clarification and goal setting, principles of communication, medical terminology, communication and documentation in the health care system, developing good work habits and coping on the job. Information on how health related behaviors contribute to disease prevention and wellness is also included.

HEALTH OCCUPATIONS II 552 (10,11,12) (SEMESTER) (1/2 CREDIT - G)

This course is designed for the student interested in increasing his/her knowledge and acquiring skills that will be utilized in almost all health care professions. Students will learn to accurately measure vital signs, demonstrate proper procedure for use of personal protective equipment, demonstrate proper body mechanics while transferring a patient and become trained in CPR. Other topics include stages of human growth and development, death and dying, and introductory concepts of anatomy, physiology, microbiology, and path physiology.

PREREQUISITE: minimum “C” grade in Health Occupations I.

BASIC NURSE ASSISTANT TRAINING PROGRAM (11,12) (SEMESTER) (1 CREDIT - G)**BNAT-CLASSROOM-554** (11,12) (SEMESTER) (1/2 CREDIT - G)**BNAT-CLINICAL-556** (11,12) (SEMESTER) (1/2 CREDIT - G)

This is a specialized course that prepares the student to be employed as a certified nursing assistant through a combination of classroom theory and clinical experience. Theoretical content includes, but is not limited to, principles of anatomy & physiology, nurse-patient interaction, the aging process, restorative care and rehabilitation, with an emphasis on the practical application of basic principles. Upon successful completion of this course, students will demonstrate proficiency of the 21 fundamental patient care skills required by the Illinois Department of Public Health and be prepared to take the exam to obtain state certification. This class meets for 2 periods. McHenry Community College Dual Credit Program recognizes this course as equal to the course at MCC and awards 7 credits for completion.

PREREQUISITE: minimum "C" grades in both Health Occupations I and II.**INDEPENDENT STUDY-VOCATIONAL 649/650** (12) (YEAR) (1 CREDIT - G)

This is an opportunity for vocationally gifted students to practice and increase skills in their chosen field.

PREREQUISITE: Recommendation of instructor, approval of Department Chair, completion of sequence.**INDUSTRIAL AND MANUFACTURING TECHNOLOGY CURRICULUM****AUTOMOTIVE TECHNOLOGY PATHWAY****AUTO SERVICE OCCUPATIONS 633/634** (11,12) (YEAR) (1 CREDIT - G)

Students will study automotive operations that include; tune-ups, engine overhaul, fuel systems, electrical systems, engine testing, cooling systems, brakes, suspension systems, emission control systems, computer-controlled systems, and drive line systems. Students will use service manuals and laboratory (shop) activities in combination with classroom instruction. A strong emphasis is placed on developing workplace skills in order to prepare the students for the working world.

PREREQUISITE: Agricultural Power I-Small Gas Engines**AUTO BODY/COLLISION REPAIR 635/636** (12) (YEAR) (2 CREDIT - G)

Students will learn and understand vehicle construction. Students will learn the proper use of hand tools, pneumatic tools, and welding equipment to repair nonstructural collision damage. Students will perform removal, alignment, and installation of mechanically attached interior and exterior components. Student will learn proper techniques for applying and finishing plastic body fillers. Students will also learn refinishing techniques for painting of panels with hands on experience using automotive spray equipment. Students will understand environmental considerations and use proper safety precautions. This course requires a two-period block of time.

PREREQUISITE Auto Service Occupations**INDEPENDENT STUDY-AUTO II 637/638** (12) (YEAR) (2 CREDITS - G)

This course is a one-year program designed to meet the needs of students that desire to learn entry-level skills in the automotive and diesel industry. Content includes emphasis on basic skills and employability skills as well as assisting in performing various services on heavy-duty and light-duty school owned vehicles. Related classroom instruction, hands-on laboratory experiences, and field experiences are designed to assist students in executing the skills and abilities associated with the industry. This course requires a two-period block of time.

PREREQUISITE: Auto Body/Collision Repair or Auto Service Occupations

CONSTRUCTION TECHNOLOGY PATHWAY

INTRODUCTION TO PROJECT DESIGN 623 (9,10,11,12) (SEMESTER) (1/2 CREDIT - G)

Students will learn board drafting standards and techniques and will design a project to be built in the Carpentry shop. Students will then build the project they have designed. Materials will be compatible with the shop tools, including wood and wood based products, plastic, paper, and to a limited extent, metal, glass, masonry and ceramic.

CARPENTRY TECHNOLOGY 612 (10,11,12) (SEMESTER) (1/2 CREDIT - G)

Students will learn basic wall and floor framing procedures and will be able to identify the elements of each. They will also learn how to calculate rafter lengths, layout and cut common and hip rafters. They will construct full scale frames and roofs for practice.

PREREQUISITE: Intro to Project Design

CONSTRUCTION TECHNOLOGY 617/618 (11,12) (YEAR) (1 CREDIT - G)

In this course, students will continue learning model-building techniques through hands-on projects in school. Planning, siting, blueprint reading, masonry, plumbing, electrical and the ability to apply safe construction techniques and practices will be emphasized.

PREREQUISITE: Construction Technology I or Carpentry Technology

INDEPENDENT STUDY-VOCATIONAL 649/650 (12) (YEAR) (1 CREDIT - G)

This is an opportunity for vocationally gifted students to practice and increase skills in their chosen field.

PREREQUISITE: Recommendation of instructor, approval of Department Chair, completion of sequence.

DRAFTING PATHWAY

COMPUTER AIDED DRAFTING & DESIGN 602 (CADD) (10,11,12) (SEMESTER) (1/2 CREDIT - G)

This is an intermediate course in technical drawing, consisting of one semester of machine related drafting including sectional views, orthographic projections, pictorial drawings, geometric construction and other related drafting. Computer assisted drafting equipment and software tools will be used with an emphasis on mechanical design and basic architectural concepts.

PREREQUISITE: Introduction to Project Design

COMPUTER AIDED DRAFTING & DESIGN II 607 (CADD II) (10,11,12) (SEMESTER) (1/2 CREDIT - G)

This is an advanced course in technical drawing consisting of one semester of machine related drafting including sheet set manager, tables and fields, layering systems, template drawings, advance symbol manipulation, external referencing, and advance editing and dimensioning. PREREQUISITE: C.A.D.D. I

3D COMPUTER AIDED DESIGN GRAPHICS 608 (10,11,12) (SEMESTER) (1/2 CREDIT - G)

Students will be introduced to three dimensional drawing. It will include topics in one semester of wireframe, surface modeling, and solid modeling. It will also include texture mapping, rendering, and light shadows.

PREREQUISITE: C.A.D.D. I & C.A.D.D. II

ARCHITECTURAL DRAFTING 603/604 (10,11,12) (YEAR) (1 CREDIT - G)

This course introduces the field of architecture. Students will study different types of design and will draw a floor plan, elevations, wall sections, kitchen detail, and foundation plans. This course acquaints students with current technical knowledge and occupational opportunities as an architect including interior design and urban design. Work will be done on a CADD (Computer Aided Drafting) system.

PREREQUISITE: Computer Aided Drafting & Design I

DRAFTING OCCUPATIONS 605/606 (11,12) (YEAR) (1 CREDIT - G)

Students will examine the principles, tools materials, techniques, equipment and processes utilized in the production and reproduction of drawings, layouts, plans and blueprints. Emphasis will be placed toward mechanical and manufacturing-related engineering analysis and three-dimensional representation through the motion of mechanisms with linkages, cam and gear design, geometric motion, working drawings, fasteners and springs, fluid power, industrial process piping. The student will be using the CAD (Computer Aided Drafting) system.

PREREQUISITE: Computer Aided Drafting & Design I

INDEPENDENT STUDY-VOCATIONAL 649/650 (12) (YEAR) (1 CREDIT - G)

This is an opportunity for vocationally gifted students to practice and increase skills in their chosen field.

PREREQUISITE: Recommendation of instructor, approval of Department Chair, completion of sequence

MANUFACTURING TECHNOLOGY PATHWAY**INTRODUCTION TO MANUFACTURING & WELDING 620** (9,10,11,12) (SEMESTER) (1/2 CREDIT - G)

This course introduces the student to the manufacturing and welding industry. Emphasis is placed on safety, hand tools, manufacturing and production, materials, controls, circuits, measurement, and blueprint reading. Students will learn basic arc and oxy-acetylene welding in the flat positions.

MANUFACTURING TECHNOLOGY 622 (10,11,12) (SEMESTER) (1/2 CREDIT - G)

This course stresses general shop safety and procedures associated with specific equipment in the shop. Students will be able to use correct procedures for welding and machine tools.

PREREQUISITE: Introduction To Manufacturing & Welding

MANUFACTURING OCCUPATIONS 625/626 (11,12) (YEAR) (1 CREDIT - G)

This course will provide learning experiences and activities in various operations, processes, materials, occupations and safety concerns associated with the metal industry. Topics of instruction are: metalworking safety; blueprint reading; design planning, measurement and layout; types and properties of metals; machine tools (lathes and mills); metalworking and sheet metal tools, casting, welding, arc and oxygen/acetylene.

PREREQUISITE: Manufacturing Technology or minimum "C" average in Introduction To Industrial Technology

WELDING FABRICATION 627/628 (11,12) (YEAR) (1CREDIT - G)

This course revisits the basics of Oxy-Acetylene, Arc, MIG, TIG welding and Blue Print Reading. Students will perform welds in the flat, horizontal, vertical up, vertical down and overhead positions. An emphasis will be placed on out of position welding. This course will also have an emphasis on design and fabrication. Upon completion of all required welding tasks, students will be permitted to bring in small projects for repair or production or will work on district projects as needed. A strong emphasis is placed on developing workplace skills in order to prepare the students for the working world.

PREREQUISITE: Ag Machine Service I

INDEPENDENT STUDY-VOCATIONAL 649/650 (12) (YEAR) (1 CREDIT - G)

This is an opportunity for vocationally gifted students to practice and increase skills in their chosen field.

PREREQUISITE: Recommendation of instructor, approval of Department Chair, completion of sequence

MATHEMATICS CURRICULUM

PLEASE NOTE: **MINIMUM STANDARDS** for Illinois public universities are three years of mathematics—Algebra I, Geometry, and Algebra II. A flow chart of the Mathematics sequence is available in the appendix.

POLICY ON CALCULATORS: Texas Instrument TI-84 Plus will be required in all math courses.

LIFE SKILLS MATH 105/106 (9,10,11,12) (YEAR) (1 CREDIT - G)

This course is designed to work on basic math skills for students who are in the life skills program. These students will develop and improve skills as well as their understanding of math computation, measurement, decimal, time, money, calendars, number in words, (checks and dates) and geometry concepts and topics. This course is designed to build the foundation for further math skills in life.

PRACTICAL MATH I 101/102 (9) (YEAR) (1 CREDIT - G)

This course is designed for students whose math skills are significantly below grade level. These students will develop and improve skills and understanding of whole numbers, decimals, fractions, percents, and geometry concepts and topics. The course is designed to build the foundation for Algebra and Geometry.

PREREQUISITE: I.E.P.

PRACTICAL ALGEBRA & GEOMETRY 103/104 (10,11,12) (YEAR) (1 CREDIT - G)

This course is designed for students whose math skills are significantly below grade level and have already taken a math course that is designed to build the foundations of Algebra. Students will learn basic algebraic and geometry concepts. Introductory geometry concepts will be integrated throughout the course with a focus on covering geometry skills and objectives in the second semester. Students will graph equations, apply definitions, properties, and theorems of polygons, and calculate perimeter, area, and volume.

PREREQUISITE: I.E.P.

PRACTICAL GEOMETRY 107/108 (11,12) (YEAR) (1-CREDIT - G)

This course is designed for students whose math skills are significantly below grade level and will prepare the student for the geometric concepts covered in this course. The course will introduce students to geometric methods to analyze, categorize and draw conclusions about lines, points, planes, and space, graph equations, apply definitions, properties, and theorems of polygons, and calculate perimeters, area, and volume.

PREREQUISITE: I.E.P.

ALGEBRA I BLOCK 135/136 (9,10,11,12) (YEAR) (2 CREDIT - G)

This two-period sequenced class will focus on covering the same skills and objectives as our regular Algebra I course. The slower pace will allow students more time to master the content. It will also allow for a wider variety of teaching strategies and classroom activities to be used. Students will simplify algebraic expressions, solve equations, and solve problems involving linear functions, exponents, linear inequalities, quadratics, and radicals. Fractions, mixed numbers, decimals, and percents will be used throughout the course. Upon successful completion of the course, a student will earn 1 credit of Algebra I and 1 credit of elective Math.

ALGEBRA I 129/130 (9,10,11,12) (YEAR) (1 CREDIT - G)

In this course, the students will solve equations and problems involving linear functions, exponents, linear inequalities, quadratics, and radicals. Students will also simplify algebraic expressions. A disciplined approach to course work is needed, since homework will be required almost daily. Use of fractions, decimals, and percents are incorporated throughout the course.

PLANE GEOMETRY 133/134 (10,11,12) (YEAR) (1 CREDIT - G)

In geometry, students will learn to solve problems involving complementary and supplementary angles, congruent triangles, parallel lines, polygons, similar polygons, the Pythagorean theorem, circles, area and volume, coordinate geometry, inequalities, trigonometry, and constructions. Students will also do some proofs requiring logical reasoning and deductive thinking.

PREREQUISITE: Algebra I

UNIFIED GEOMETRY 137/138 (9,10,11,12) (YEAR) (1 CREDIT - H)

The chief objective of Unified Geometry is to teach students to do logical and deductive thinking by using proofs. Students will explore plane, coordinate, and transformational approaches to geometry. Students are expected to have a good command of Algebra I skills. Successful students will be able to read material and work independently. Homework will be required almost daily.

PREREQUISITE: Algebra I (recommended with B or higher)

ALGEBRA II 139/140 (10,11,12) (YEAR) (1 CREDIT - G)

Algebra II will expose students to higher level concepts that are components of the PSAE/work keys and emphasize the connection between theory and application. Advanced topics in number sense, probability and statistics, and functions are applied in this course. Linear models, quadratic equations and their graphs are discussed along with the concept of complex numbers. Logarithmic, polynomial, rational, and exponential functions are explored.

PREREQUISITE: Algebra I and Geometry

ALGEBRA II HONORS 141/142 (10,11,12) (YEAR) (1 CREDIT - H)

This course is an extension of Algebra I and requires some familiarity with geometry. Students will solve problems and equations involving linear functions, systems of equations, radicals and irrational numbers, complex numbers, and polynomials. Homework will be required almost daily.

PREREQUISITE: Algebra I and Geometry

ALGEBRA III 143/144 (11,12) (YEAR) (1 CREDIT - G)

Algebra III develops concepts of functions and statistics simultaneously and weaves trigonometry throughout. It provides opportunities for students to learn to display, describe, transform, and interpret numerical information in the form of data, graphs, or equations. Throughout the course, statistical concepts are integrated with graphical and algebraic ones through the construction of mathematical models of relationships in data sets. Generating models is facilitated by using a statistical package on a computer [or calculator], so students are exposed to a wide range of models including linear, quadratic, higher-order polynomial, exponential, logarithmic, and trigonometric functions. Statistical modeling extends through binomial and normal distributions, and gives students some exposure to hypothesis testing.

PREREQUISITE: Algebra II

STATISTICS AP 155/156 (11,12) (YEAR) (1 CREDIT - H)

Statistics AP will introduce students to the major concepts and tools for collecting, and analyzing data as well as drawing conclusions from data. The topics in this course include, but are not limited to, an exploratory analysis of data, sampling and experimentation, observing patterns and anticipating patterns by producing models using probability and simulation. Statistical inference will be done using confidence intervals, tests of significance, and special cases of normally distributed data. The AP Statistics exam will be offered in May.

PREREQUISITE: Algebra II-H

PRE-CALCULUS 145/146 (11,12) (YEAR) (1 CREDIT - H)

Students will solve equations and problems involving sequences and series, conic sections, logarithms, probability, trigonometry, analytical geometry, and polar coordinates. Homework will be required almost daily. A graphing calculator is required for this course.

PREREQUISITE: Algebra II

CALCULUS-AB AP 149/150 (12) (YEAR) (1 CREDIT - H)

In this course, students will find derivatives and integrals of various types of functions including polynomial, log, algebraic, trigonometric, and exponential. Students will apply derivatives and integrals to both science and business applications. This course meets all requirements of Advanced Placement Calculus-AB. The May Advanced Placement Calculus-AB Exam will be required. This is a college level course. A graphing calculator is required for this course.

PREREQUISITE: Pre-Calculus

PHYSICAL EDUCATION CURRICULUM

Physical Education offers students a unique opportunity to develop physically, mentally, emotionally, and socially. At Marengo Community High School, students are required to pass eight semesters of physical education including one semester of health and one quarter of classroom driver's education. *Beginning the 2010-2011 school year, Health is being moved to a sophomore class and Driver Education classroom to a freshman class. State mandated health instruction will be taught within the students PE class.*

FRESHMEN PE 704/705 (9) (YEAR) (1/2 CREDIT/SEMESTER - G)

The students are introduced to a wide range of activities to incorporate cognitive and mechanical concepts of team and individual activities. The concepts of aerobic fitness and weight training are also introduced. Worksheets, written assignments quizzes, and/or tests are also integrated into the curriculum. All students are required to take and pass one semester of health (integrated throughout the year in PE) and one quarter of driver's education barring any schedule conflicts. Activities taught in this course include the following: flicker ball, flag football, golf, tennis, soccer, ultimate Frisbee/football, basketball, badminton, softball, speedball, volleyball, big base, kickball, satryn ball, dodge ball, floor hockey, pickle ball, and team handball. Early high school state goals 19-24 for PE and Health, along with the Illinois School Code for Health Education, will be met through this course.

SOPHOMORE PE-HEALTH 706/707 (10) (1/2 CREDIT/SEMESTER - G)

The students are introduced to a wide range of activities to incorporate cognitive and mechanical concepts of team and individual activities. The concepts of aerobic fitness and weight training are also introduced. Worksheets, written assignments quizzes, and/or tests are also integrated into the curriculum. All students are required to take and pass one semester of health (integrated throughout the year in PE) and one quarter of driver's education barring any schedule conflicts. Activities taught in this course include the following: flicker ball, flag football, golf, tennis, soccer, ultimate Frisbee/football, basketball, badminton, softball, speedball, volleyball, big base, kickball, satryn ball, dodge ball, floor hockey, pickle ball, and team handball. Early high school state goals 19-24 for PE and Health, along with the Illinois School Code for Health Education, will be met through this course.

JUNIOR/SENIOR PE 711/712 (11,12) (YEAR) (1/2 CREDIT/SEMESTER - G)

Juniors and seniors have an opportunity to select activities that suit their interests, physical needs, fitness levels and fitness goals thereby increasing activity levels and the likelihood of the continuation of moderate exercise into adulthood. The students set fitness goals based on fitness tests performed approximately every six weeks. Participation, evaluation of goals, tests, and written assignments may be included as performance indicators. Activities offered in this course may include the following: flicker ball, flag football, golf, tennis, soccer, ultimate Frisbee/football, basketball, badminton, softball, speed-away, recreational activities (baggo, bocce ball, horseshoes, Frisbee), speedball, navy ball, volleyball, big base, kickball, satryn ball, dodge ball, floor hockey, pickle ball, and team handball. Late high school state goals 19-24 for PE and Health, along with the Illinois School Code for Health Education, will be met through this course.

ZERO HOUR PE 713/714 (11,12) (YEAR) (1/2 CREDIT/SEMESTER - G)

NOTE: CLASS STARTS AT 7:00 A.M. The student is responsible for transportation.

The students are introduced to a wide range of activities to incorporate cognitive and mechanical concepts of team and individual activities. The concepts of aerobic fitness and weight training are also introduced. Activities taught in this course include the following: flicker ball, flag football, golf, tennis, soccer, ultimate Frisbee/football, basketball, badminton, softball, speed-away, recreational activities (baggo, bocce ball, horseshoes, Frisbee), speedball, navy ball, volleyball, big base, kickball, satryn ball, dodge ball, floor hockey, pickle ball and team handball. Late high school state goals 19-24 for PE and Health, along with the Illinois School Code for Health Education, will be met through this course.

Students will also have an opportunity to select activities that suit their interests, physical needs, fitness levels, and fitness goals thereby increasing activity levels and the likelihood of the continuation of moderate exercise into adulthood. The students set fitness goals based on fitness tests performed approximately every six weeks. Participation, evaluation of goals, tests, and written assignments maybe included as performance indicators.

PREREQUISITE: Must be a junior or senior and have the need for a zero hour PE due to other class scheduling conflicts or desired to have a study hall during the school day.

LIFE SKILLS HEALTH 701 (10) (SEMESTER) (1/2 CREDIT - G)

The health curriculum content includes the principles and guidelines for mental health, human growth and development, drug use and abuse, human sexuality, personal health, nutrition, consumer health and careers in the health field, prevention and control of diseases, environmental health, and first aid.

PREREQUISITE: For Practical Health: I.E.P.

DRIVER EDUCATION CLASSROOM 730 (9) (1/4 CREDIT - G)

The driver education program in the classroom provides students the educational experiences that will give pupils the knowledge, the habits, the skills, and most importantly, the attitudes necessary for the safe operation of motor vehicles. This course meets the Illinois requirement in regard to safety education.

PREREQUISITE: Students must be at least 14 years old in order to enroll in driver's education classroom. The oldest students will be assigned to driver's education classroom first. If a student enrolls as a 14 year old they must complete and pass both the classroom and the behind the wheel portions of driver's education within 12 months.

BEHIND THE WHEEL: Students will be pulled out of study hall, PE, or an elective class by age and teacher availability throughout the semester. This will not be indicated on their class schedule.

SCIENCE CURRICULUM

A flow chart of the Science sequence is available in the appendix.

PRACTICAL PHYSICAL SCIENCE 201/202 (9,10) (YEAR) (1 CREDIT - G)

Students will learn the scientific process while focusing on concepts from chemistry and physics. Students will do hands-on activities and labs while focusing on real world situations to reinforce the concepts taught in class.

PREREQUISITE: I.E.P., Offered in 2013-2014 (alternate years)

PRACTICAL BIOLOGY 205/206 (9,10) (YEAR) (1 CREDIT - G)

In this introductory life science course, students actively investigate and analyze basic biological concepts. Students will use microscopes and other hands-on activities to learn about cells, organisms in their environment, and the focus primarily on the plant and animal kingdoms.

PREREQUISITE: I.E.P., Offered in 2012-2013 (alternate years)

PHYSICAL SCIENCE 209/210 (9) (YEAR) (1 CREDIT - G)

This course will emphasize scientific inquiry skills while covering scientific content in chemistry, physics, and earth science. Students will increase their knowledge of these three areas through a variety of hands on experiences, as well as a variety of lab activities designed to reinforce physical science concepts discussed in class.

BIOLOGY 213/214 (9,10) (YEAR) (1 CREDIT - G)

In this course the student will learn the interrelationships of living organisms. Students will be able to use the skills necessary to work safely, efficiently, and cooperatively in a laboratory setting. They will use the scientific tools necessary to apply the scientific method to identify and solve a problem, make decisions, and formulate new ideas based on information gathered. Emphasis will be placed upon effectively communicating those ideas, decisions, and arguments in a public and private forum. Freshmen must have 90% scores on both the science and the composite sections on the Explore placement test.

EARTH SCIENCE 217/218 (10,11,12) (YEAR) (1 CREDIT - G)

This is a laboratory class that studies the earth and the physical processes that shape and build it. It studies the atmosphere and the processes that govern the earth's weather systems. It also studies the physical characteristics of the solar system and stars including the basic forces that affect the motion of objects in space. At the conclusion of this course, the students will demonstrate an understanding of these processes that will give them a basis to make educated and well-informed decisions about the physical world in which they live.

ENVIRONMENTAL AND BIOLOGICAL ISSUES (EBI) 235/236 (11,12) (YEAR) (1 CREDIT - G)

This course will provide instruction concerning relevant biological and ecological topics that currently impact our society. Students will be asked to synthesize and debate the historical, current, and future impact of various economic, ethical, social, and political policies surrounding the biological and ecological topics taught. The curriculum of this course will be rooted in problem-based learning strategies in order to aid students in the development and mastery of critical thinking skills, with students being asked to solve problems using an informed decision-making process and present their solutions using a variety of formats. This is a lab class.

PREREQUISITE: Completion of two years of Science, one of which was Biology; teacher recommendation

CHEMISTRY 221/222 (10,11,12) (YEAR) (1 CREDIT - G)

Chemistry is a laboratory science, which deals with the properties, composition and structure of matter, and the changes it can undergo. Students will demonstrate the use of observation, models, and the scientific method to develop a logical explanation of the unknown. Emphasis is placed upon improving laboratory skills and demonstration of appropriate safety in the lab. The successful chemistry student will understand the principle theories of chemistry and apply these to better understand common everyday situations. It is highly recommended that the student have concurrent enrollment or completion of Algebra II.

PREREQUISITE: Algebra I (recommend with a minimum "C" average)

ACCELERATED CHEMISTRY 227/228 (10,11,12) (YEAR) (1 CREDIT - H)

This course is much more challenging than general Chemistry, and will introduce students to the AP Chemistry curriculum. The course is laboratory based and quantitative in nature. Students will demonstrate the application of the chemical principles of inorganic chemistry and basic organic chemistry. Emphasis is placed upon the student's ability to independently formulate and propose solutions to content-based problems. These solutions are mathematically oriented and, therefore, students must exhibit an aptitude for understanding these relationships. Students will demonstrate the use of appropriate instruments, computers, and various other technologies in the acquisition and interpretation of data. It is highly recommended that the student have concurrent enrollment or completion of Algebra II.

PREREQUISITE: "B" average or better in Algebra I and Biology and teacher recommendation.

CHEMISTRY AP 231/232 (11,12) (1 CREDIT - H)

AP Chemistry is equivalent to an introductory freshmen level college chemistry class. Emphasis is placed on lab skills, critical thinking logic and the problem solving skills necessary to pass the AP exam. Student must maintain a "C" or better in the first semester to maintain enrollment.

PREREQUISITE: "B" or better in both semesters of Accelerated Chemistry or "A" or better in both semesters of Chemistry plus necessary summer preparation, additional time commitment (early start), and teacher recommendation.

ADVANCED BIOLOGY 225/226 (11,12) (YEAR) (1 CREDIT - H)

Advanced Biology is a course designed for those students who plan to attend college and have special interest in the sciences. The course is designed to reinforce the concepts of biology from an evolutionary and cellular perspective. Students will demonstrate proficiency in: biochemistry, cytology and histology, cell energetic, cell respiration and photosynthesis, genetics and heredity, and anatomy and physiology via laboratory investigations, lecture/discussion, and individualized projects. This course offers the student an opportunity to conduct research on individualized projects, synthesizing previous content learned with their own observations and interest.

PREREQUISITES: Biology and Chemistry

PHYSICS 233/234 (11,12) (YEAR) (1 CREDIT - H)

This course is designed for those students who plan to attend college and have a special interest in the sciences. The major portion of this course is devoted to the quantitative study of mechanics (the study of energy and motion), electricity, and light. This course requires knowledge of algebra and geometry, and introduces the student to some applications of trigonometry. At the conclusion of this course, the student will be able to analyze natural and man-made physical systems by applying the principles of energy and motion. In addition, the student will be able to demonstrate an understanding of the connections and relationships among science, technology, and society.

PREREQUISITES: Algebra II and Chemistry

FORENSIC SCIENCE 215/216 (11,12) (YEAR) (1 CREDIT - G)

Forensic science is the application of science to matters of the law, also known as criminalities. Forensic scientists examine evidence from crimes or alleged crimes such as drugs, hair, and fibers, soil and glass, handwriting, DNA, blood factors, along with a host of other types of physical items. In this course the student will learn how to analyze a crime scene, identify fingerprints, blood patterns and much more. This is a science/lab class.

PREREQUISITE: Biology, Agricultural Science or consent of instructor.

INDEPENDENT STUDY-SCIENCE 237/238 (12) (YEAR) (1 CREDIT - H)

This course is intended to provide the students with superior aptitude and interest in science with an opportunity to further develop their scientific knowledge base.

PREREQUISITES: Chemistry AP, Advanced Biology, Physics (2 of 3 required, may be enrolled in one senior year), science department approval

SOCIAL STUDIES CURRICULUM

GLOBAL STUDIES 295/296 (9,10) (YEAR) (1 CREDIT - G)

At the conclusion of this course, students will be able to apply the social sciences to understand issues that face the world today. This course will focus on issues of population, conflict, culture, supply and demand, trade, and globalization.

PRACTICAL SOCIAL STUDIES 259/260 (11,12) (YEAR) (1 CREDIT - G)

This is a course designed to impart basic knowledge to students in the areas of consumer economics/geography, and American government/law. Topics and subjects provide students with the knowledge required to examine, evaluate, understand, and participate in an active role in societal decisions. This meets the resource management and global studies requirements.

PREREQUISITE: I.E.P., Offered in 2012-2013 (alternate years)

PRACTICAL U.S. HISTORY 263/264 (11,12) (YEAR) (1 CREDIT - G)

Students will become familiar with our nation's history from the early explorers to the present. They will learn basic democratic principles and fulfill the federal and state constitution tests requirement.

PREREQUISITE: I.E.P., Offered in 2013-2014 (alternate years)

UNITED STATES HISTORY 271/272 (11) (YEAR) (1 CREDIT - G)

This course is a comprehensive and chronological study of the American experience. Students will evaluate the developments of political, economic, and social institutions of the nation. A major emphasis will be placed on the Twentieth Century and America's role in the world. Students will study and recall the development and application of the federal and Illinois constitutions.

UNITED STATES HISTORY AP 281/282 (11) (YEAR) (1 CREDIT - H)

The evolution of the United States becoming an increasingly industrial, urbanized, and pluralistic society in this century will be the focus of this course. Throughout the year, students will discover the struggles our nation has had with various domestic and international problems. While the content is similar to the standard U.S. History course, certain topics will be explored in greater depth both in class and through independent research. Projects will be assigned throughout the course to supplement topics of learning. Students will be required to take the May AP test. A summer reading list will be assigned.

PREREQUISITE: Strong reading ability and B cumulative GPA.

WORLD CIVILIZATIONS 293/294 (9,10,11,12) (YEAR) (1 CREDIT - G)

This course will provide an historical background of the world from ancient times through the Middle Ages and renaissance to the modern era. Content also includes Asian and African history, the age of revolution, the Industrial revolution, and Twentieth Century history. Students will study key themes of the various eras of history. *This may be taken as a semester only. (This course was also known as Origins of Man and Pathways to the Future.)

ILLINOIS HISTORY 288 (10,11,12) (SEMESTER) (1/2 CREDIT - G)

This course traces the history of our state from prehistoric people through the late twentieth century. Students will examine the development of Illinois from a territory through statehood to its becoming an industrial and technological center, as well as a microcosm of the nation. Students will explore state, regional, and local government within the context of Illinois' history.

NOTE: Students should have at least average reading skills.

CURRENT ISSUES 287 (11,12) (SEMESTER) (1/2 CREDIT - G)

This course introduces students to local, national, and international issues. Various current publications (newspapers, periodicals, etc.) will be used. Students will learn to prepare written and oral reports, write opinion papers, and participate in panel discussions and debates.

MACROECONOMICS AP 253/254 (11,12) (SEMESTER/YEAR) (1/2 OR 1 CREDIT - H)

This course will give students a thorough understanding of the principles of economics that apply to an economic system as a whole. Topics include national income and price-level determination, measuring economic performance, the financial sector, inflation and unemployment. Student may take as 1 semester course.

NOTE: It is recommended that the student have a cumulative G.P.A. of 3.0 or higher and strong reading skills. US History AP is suggested.

PREREQUISITE: Any Business Class (1 semester or year course)

PSYCHOLOGY 291 (11,12) (SEMESTER) (1/2 CREDIT - G)

This is a study of basic psychological concepts and their applications. Topics include psychological methods and measurement, human development and motivation, theories of personality, principles of learning, intelligence and creativity, and personality disturbances.

NOTE: Students should have at least average reading skills.

SOCIOLOGY 292 (11,12) (SEMESTER) (1/2 CREDIT - G)

This course covers all major areas of sociology in a blend of concept, theory, and application. Topics range from the family unit to the problems of global mass society. Through case studies and reading reports, students develop skills of analysis and observation.

NOTE: Students should have at least average reading skills.

GOVERNMENT/CIVICS 299 (12) (SEMESTER) (1/2 CREDIT - G)

American Government/Civics is a one semester course that explores the question of "What is an effective citizen?" The course is structured to promote student interaction with other members of the class as the central questions of the course are examined. All American Government/Civics class sections participate in a semester long legislative simulation. The simulation attempts to approximate with as much authenticity as possible the structure and politics of the legislative process. Students take on political leadership and legislative responsibilities as they engage in decision-making processes common to a democratic society. The semester concludes with Committee Hearings and a reenactment of the House of Representatives in full session. To fulfill State requirements for civic education, instruction and evaluation of student understanding of the United States Constitution, Illinois State Constitution, the Declaration of Independence, the Flag Code, and elections are incorporated in the course curriculum. Successful completion of this course meets the 0.5 credit requirement in Government/Civics for graduation.

WORK-RELATED EXPERIENCES

RESOURCE STUDY SKILLS 683/684 (9,10,11,12) (YEAR) (1-CREDIT - G)

This is a teacher led study area for students who have an I.E.P. The purpose of this lab experience is for the student to receive academic support for general education classes and make progress on I.E.P. goals. The students will receive group instruction via daily skills lessons that will focus on reading, writing, math, test taking, goal setting, time management and note taking skills. Students will be graded daily on attendance, skill lesson completion, homework completion, goal progress, and participation.

PREREQUISITE: I.E.P.

PRACTICAL LIFE SKILLS I 671/272 (9) (YEAR) (1 CREDIT - G)

PRACTICAL LIFE SKILLS II 675/676 (10) (YEAR) (1 CREDIT - G)

PRACTICAL LIFE SKILLS III 679/680 (11) (YEAR) (1 CREDIT - G)

PRACTICAL LIFE SKILLS IV 681/682 (12) (YEAR) (1 CREDIT - G)

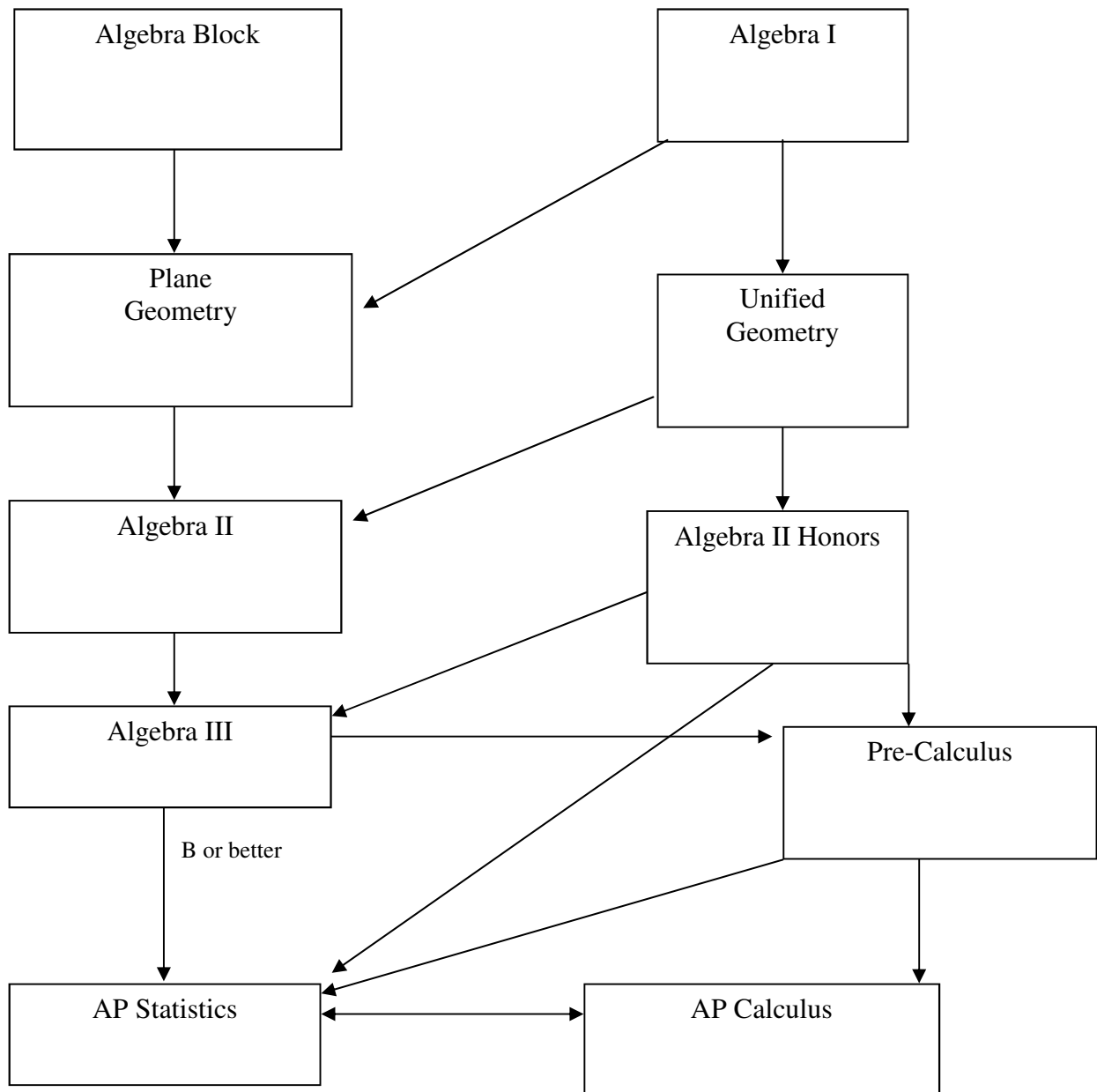
In this course, students will use hands-on classroom activities and/or community field trips to improve their independent living skills. Specific units are based on the students' needs and IEP goals. Units include: maintaining a home, managing finances, job related activities, engaging in appropriate health and recreational activities, social skills, understanding and developing learning styles and writing resumes.

PREREQUISITE: I.E.P.

VOCATIONAL OCCUPATIONS 685/686 (10,11,12) (YEAR) (1 CREDIT - G)

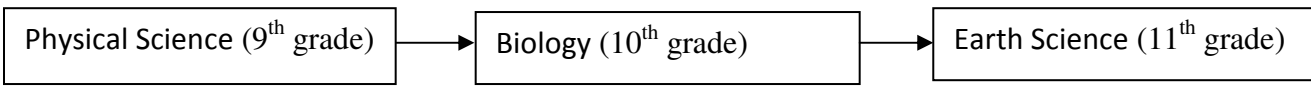
This course is directed toward those students who are interested in preparing for future occupational training. The student must meet regulated requirements in order to be enrolled. The student is employed at workstations within the school for one or two periods. The student will learn good work habits, develop job responsibilities, and be able to establish a rapport between employer and employee.

PREREQUISITE: I.E.P.

APPENDIX**Math Flow Chart**

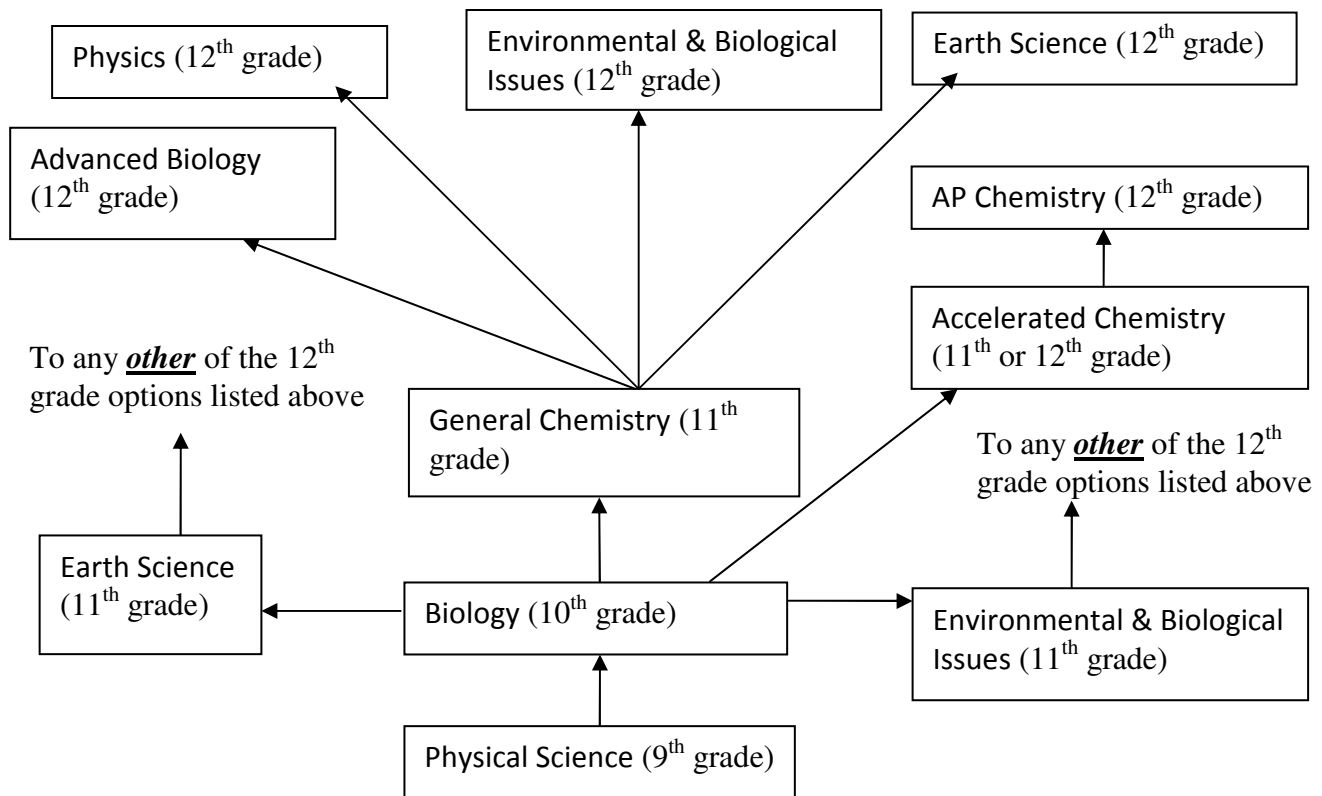
Science Flow Chart

General Science Course Sequence: This sequence of courses will ensure students are adequately prepared for the PSAE tests as juniors.



Below are other possible course sequences for students. All sequences are written as if students will take 4 years of science. Because of the current 2-year graduation requirement in science, students could stop after two years (not recommended), or stop after 3 years of science.

Possible course sequences for students taking Physical Science in 9th grade: (if no courses are taken concurrently)



Possible course sequence for students taking Biology in 9th grade: (if no courses are taken concurrently)

